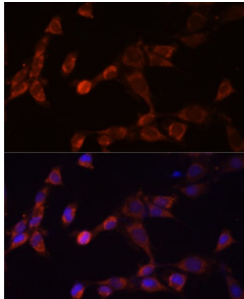


26S Proteasome Non-ATPase Regulatory Subunit 14 (PSMD14) Antibody

Catalogue No.: abx126421



Immunofluorescence analysis of NIH-3T3 cells using PSMD14 Antibody (1/100 dilution, 40x lens). Blue: DAPI for nuclear staining.

PSMD14 Antibody is a Rabbit Polyclonal against PSMD14. This gene encodes a component of the 26S proteasome. The 26S proteasome is a large multiprotein complex that catalyzes the degradation of ubiquitinated intracellular proteins. The encoded protein is a component of the 19S regulatory cap complex of the 26S proteasome and mediates substrate deubiquitination. A pseudogene of this gene is also located on the long arm of chromosome 2.

Target:	26S Proteasome Non-ATPase Regulatory Subunit 14 (PSMD14)
Clonality:	Polyclonal
Reactivity:	Human, Mouse, Rat
Tested Applications:	IF/ICC
Host:	Rabbit
Recommended dilutions:	IF/ICC: 1/50 - 1/100. Optimal dilutions/concentrations should be determined by the end user.
Conjugation:	Unconjugated
Immunogen:	Recombinant fusion protein corresponding to human PSMD14
Isotype:	IgG
Form:	Liquid
Purification:	Purified by affinity chromatography.
Storage:	Aliquot and store at -20°C. Avoid repeated freeze/thaw cycles.
UniProt Primary AC:	O00487 (UniProt , ExPASy)

Datasheet

Version: 3.0.0
Revision date: 19 Jul 2025



Gene Symbol: PSMD14

GeneID: [10213](#)

OMIM: [607173](#)

NCBI Accession: NP_005796.1

HGNC: 16889

KEGG: hsa:10213

Ensembl: ENSG00000115233

String: [9606.ENSP00000386541](#)

Buffer: PBS, pH 7.3, containing 0.02% sodium azide, 50% glycerol.

Concentration: 1 mg/ml

Note: THIS PRODUCT IS FOR RESEARCH USE ONLY. NOT FOR USE IN DIAGNOSTIC, THERAPEUTIC OR COSMETIC PROCEDURES. NOT FOR HUMAN OR ANIMAL CONSUMPTION.