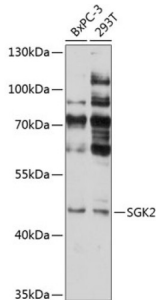


## Serum/Glucocorticoid Regulated Kinase 2 (SGK2) Antibody

Catalogue No.: abx126544



Western blot analysis of extracts of various cell lines using SGK2 Antibody (1/1000 dilution).

SGK2 Antibody is a Rabbit Polyclonal against SGK2.

<b>Target:</b>	Serum/Glucocorticoid Regulated Kinase 2 (SGK2)
<b>Clonality:</b>	Polyclonal
<b>Reactivity:</b>	Human
<b>Tested Applications:</b>	WB
<b>Host:</b>	Rabbit
<b>Recommended dilutions:</b>	WB: 1/500 - 1/2000. Optimal dilutions/concentrations should be determined by the end user.
<b>Conjugation:</b>	Unconjugated
<b>Immunogen:</b>	Recombinant fusion protein corresponding to human SGK2
<b>Isotype:</b>	IgG
<b>Form:</b>	Liquid
<b>Purification:</b>	Purified by affinity chromatography.
<b>Storage:</b>	Aliquot and store at -20°C. Avoid repeated freeze/thaw cycles.
<b>UniProt Primary AC:</b>	Q9HBY8 ( <a href="#">UniProt</a> , <a href="#">ExPASy</a> )
<b>Gene Symbol:</b>	SGK2
<b>GeneID:</b>	<a href="#">10110</a>

# Datasheet

Version: 3.0.0  
Revision date: 11 Aug 2025



**NCBI Accession:** NP\_733794.1

**String:** [9606.ENSF00000340608](#)

**Molecular Weight:** Calculated MW: 41 kDa/43 kDa/47 kDa  
Observed MW: 47 kDa

**Buffer:** PBS, pH 7.3, containing 0.01% thiomersal, 50% glycerol.

**Concentration:** 1 mg/ml

**Note:** THIS PRODUCT IS FOR RESEARCH USE ONLY. NOT FOR USE IN DIAGNOSTIC, THERAPEUTIC OR COSMETIC PROCEDURES. NOT FOR HUMAN OR ANIMAL CONSUMPTION.

For Reference Only