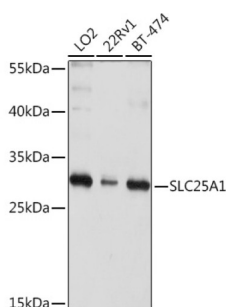
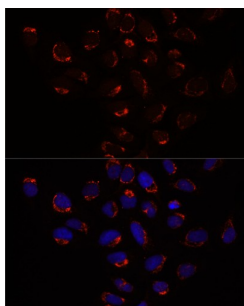


Solute Carrier Family 25 Member 1 (SLC25A1) Antibody

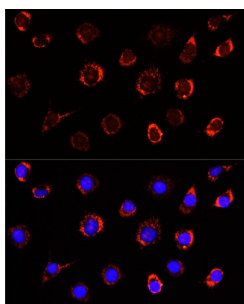
Catalogue No.: abx126567



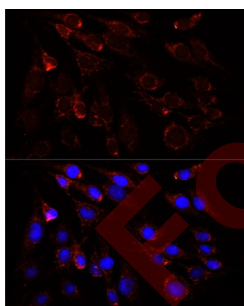
Western blot analysis of various lysates using SLC25A1 Antibody at 1/1000 dilution.
Secondary antibody: HRP-conjugated Goat anti-Rabbit IgG (H+L) at 1/10000 dilution.
Lysates/proteins: 25 µg per lane. Blocking buffer: 3% nonfat dry milk in TBST. Exposure time: 5s.



Immunofluorescence analysis of U2OS cells using SLC25A1 Antibody at dilution of 1/100.
Secondary antibody: Cy3-conjugated Goat anti-Rabbit IgG (H+L) at 1/500 dilution. Blue: DAPI for nuclear staining.



Immunofluorescence analysis of L929 cells using SLC25A1 Antibody at dilution of 1/100.
Secondary antibody: Cy3-conjugated Goat anti-Rabbit IgG (H+L) at 1/500 dilution. Blue: DAPI for nuclear staining.



Immunofluorescence analysis of C6 cells using SLC25A1 Antibody at dilution of 1/100.
Secondary antibody: Cy3-conjugated Goat anti-Rabbit IgG (H+L) at 1/500 dilution. Blue: DAPI for nuclear staining.

SLC25A1 Antibody is a Rabbit Polyclonal against SLC25A1.

Target: Solute Carrier Family 25 Member 1 (SLC25A1)

Clonality: Polyclonal

Reactivity: Human, Mouse, Rat

Datasheet

Version: 4.0.0
Revision date: 11 Sep 2025



Tested Applications:	ELISA, WB, IF/ICC
Host:	Rabbit
Recommended dilutions:	ELISA: 1 µg/ml, WB: 1/500 - 1/2000, IF/ICC: 1/50 - 1/200. Optimal dilutions/concentrations should be determined by the end user.
Conjugation:	Unconjugated
Immunogen:	Recombinant protein corresponding to SLC25A1. The exact sequence is proprietary.
Isotype:	IgG
Form:	Liquid
Purification:	Purified by affinity chromatography.
Storage:	Aliquot and store at -20°C. Avoid repeated freeze/thaw cycles.
UniProt Primary AC:	P53007 (UniProt , ExPASy)
Gene Symbol:	SLC25A1
GeneID:	6576
NCBI Accession:	NP_005975.1
KEGG:	hsa:6576
String:	9606.ENSP00000215882
Molecular Weight:	Calculated MW: 34 kDa Observed MW: 34 kDa
Buffer:	PBS, pH 7.3, containing 0.09% sodium azide, 50% glycerol.
Concentration:	> 0.2 mg/ml
Note:	THIS PRODUCT IS FOR RESEARCH USE ONLY. NOT FOR USE IN DIAGNOSTIC, THERAPEUTIC OR COSMETIC PROCEDURES. NOT FOR HUMAN OR ANIMAL CONSUMPTION.