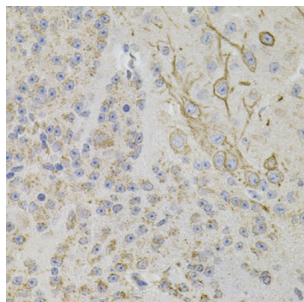
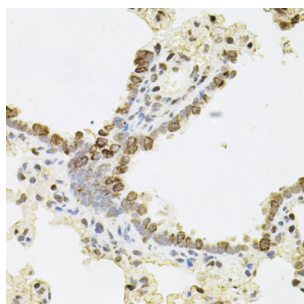


Regenerating Islet Derived Protein 3 Alpha (REG3A) Antibody

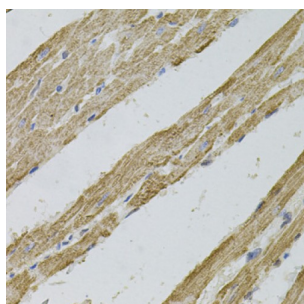
Catalogue No.: abx001713



Immunohistochemistry of paraffin-embedded Mouse brain using REG3A Antibody



Immunohistochemistry of paraffin-embedded Rat lung using REG3A Antibody



Immunohistochemistry of paraffin-embedded Rat heart using REG3A Antibody

REG3A Antibody is a Rabbit Polyclonal antibody against REG3A. This gene encodes a pancreatic secretory protein that may be involved in cell proliferation or differentiation. It has similarity to the C-type lectin superfamily. The enhanced expression of this gene is observed during pancreatic inflammation and liver carcinogenesis. Alternate splicing results in multiple transcript variants that encode the same protein.[provided by RefSeq, Dec 2010].

Target: Regenerating Islet Derived Protein 3 Alpha (REG3A)

Clonality: Polyclonal

Reactivity: Human, Mouse, Rat

Tested Applications: IHC

Host: Rabbit

Recommended dilutions: IHC-P: 1/50 - 1/200. Not tested in IHC-F. Optimal dilutions/concentrations should be determined by the end user.

Datasheet

Version: 4.0.0

Revision date: 20 Aug 2025



Conjugation:	Unconjugated
Immunogen:	Recombinant fusion protein corresponding to human REG3A
Isotype:	IgG
Form:	Liquid
Purification:	Purified by affinity chromatography.
Storage:	Aliquot and store at -20°C. Avoid repeated freeze/thaw cycles.
UniProt Primary AC:	Q06141 (UniProt , ExPASy)
Gene Symbol:	REG3A
GeneID:	5068
NCBI Accession:	NP_002571.1
Buffer:	PBS, pH 7.3, containing 0.02% sodium azide, 50% glycerol.
Concentration:	1 mg/ml
Note:	THIS PRODUCT IS FOR RESEARCH USE ONLY. NOT FOR USE IN DIAGNOSTIC, THERAPEUTIC OR COSMETIC PROCEDURES. NOT FOR HUMAN OR ANIMAL CONSUMPTION.