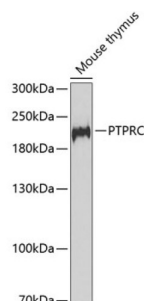
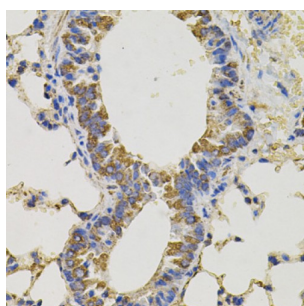


## Receptor-Type Tyrosine-Protein Phosphatase C / CD45 (PTPRC) Antibody

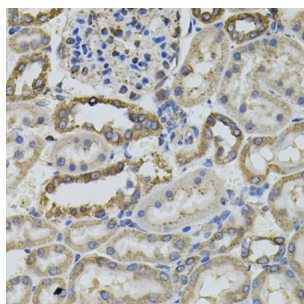
Catalogue No.: abx001727



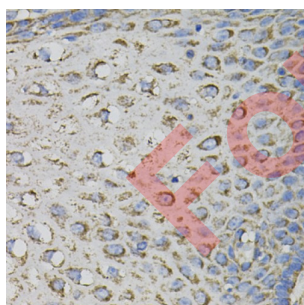
Western blot analysis of extracts of Mouse thymus using PTPRC Antibody (1/1000 dilution).



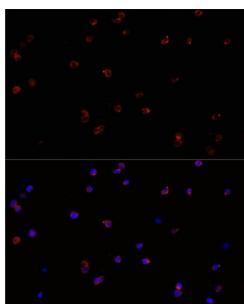
Immunohistochemistry of paraffin-embedded Mouse lung using PTPRC Antibody



Immunohistochemistry of paraffin-embedded Rat kidney using PTPRC Antibody



Immunohistochemistry of paraffin-embedded Human esophagus using PTPRC Antibody



Immunofluorescence analysis of Jurkat cells using PTPRC Antibody (1/100 dilution). Blue: DAPI for nuclear staining.

# Datasheet

Version: 4.0.0  
Revision date: 13 Aug 2025



PTPRC Antibody is a Rabbit Polyclonal antibody against PTPRC. The protein encoded by this gene is a member of the protein tyrosine phosphatase (PTP) family. PTPs are known to be signaling molecules that regulate a variety of cellular processes including cell growth, differentiation, mitosis, and oncogenic transformation. This PTP contains an extracellular domain, a single transmembrane segment and two tandem intracytoplasmic catalytic domains, and thus is classified as a receptor type PTP. This PTP has been shown to be an essential regulator of T- and B-cell antigen receptor signaling. It functions through either direct interaction with components of the antigen receptor complexes, or by activating various Src family kinases required for the antigen receptor signaling. This PTP also suppresses JAK kinases, and thus functions as a regulator of cytokine receptor signaling. Alternatively spliced transcripts variants of this gene, which encode distinct isoforms, have been reported.

<b>Target:</b>	Receptor-Type Tyrosine-Protein Phosphatase C / CD45 (PTPRC)
<b>Clonality:</b>	Polyclonal
<b>Reactivity:</b>	Human, Mouse, Rat
<b>Tested Applications:</b>	WB, IHC, IF/ICC
<b>Host:</b>	Rabbit
<b>Recommended dilutions:</b>	WB: 1/500 - 1/2000, IHC-P: 1/50 - 1/200, IF/ICC: 1/50 - 1/200. Not tested in IHC-F. Optimal dilutions/concentrations should be determined by the end user.
<b>Conjugation:</b>	Unconjugated
<b>Immunogen:</b>	A synthetic peptide corresponding to human PTPRC
<b>Isotype:</b>	IgG
<b>Form:</b>	Liquid
<b>Purification:</b>	Purified by affinity chromatography.
<b>Storage:</b>	Aliquot and store at -20°C. Avoid repeated freeze/thaw cycles.
<b>UniProt Primary AC:</b>	P08575 ( <a href="#">UniProt</a> , <a href="#">ExPASy</a> )
<b>Gene Symbol:</b>	PTPRC
<b>GeneID:</b>	<a href="#">5788</a>
<b>NCBI Accession:</b>	NP_002829.3
<b>KEGG:</b>	hsa:5788
<b>String:</b>	<a href="#">9606.ENSP00000411355</a>

# Datasheet

Version: 4.0.0

Revision date: 13 Aug 2025



**Molecular Weight:** Calculated MW: 130 kDa/147 kDa  
Observed MW: 185 kDa

**Buffer:** PBS, pH 7.3, containing 0.02% sodium azide, 50% glycerol.

**Concentration:** 1 mg/ml

**Note:** THIS PRODUCT IS FOR RESEARCH USE ONLY. NOT FOR USE IN DIAGNOSTIC, THERAPEUTIC OR COSMETIC PROCEDURES. NOT FOR HUMAN OR ANIMAL CONSUMPTION.

For Reference Only