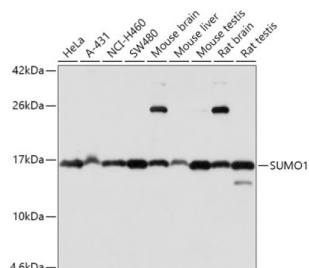
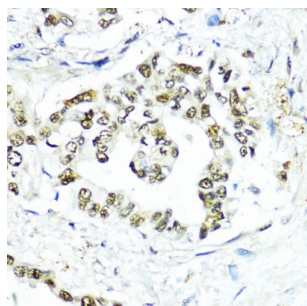


Small Ubiquitin Related Modifier Protein 1 (SUMO1) Antibody

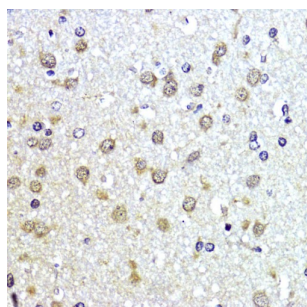
Catalogue No.: abx001742



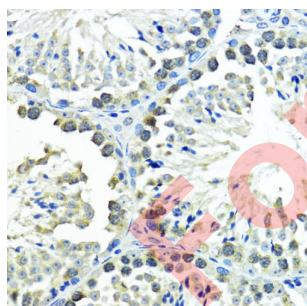
Western blot analysis of extracts of various cell lines using SUMO1 Antibody (1/1000 dilution).



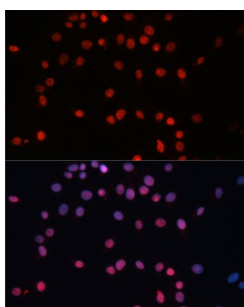
Immunohistochemistry of paraffin-embedded Human lung cancer using SUMO1 Antibody (1/200 dilution, 40x lens).



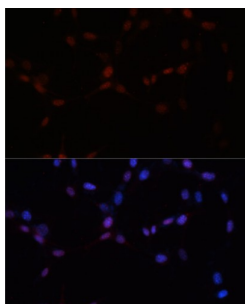
Immunohistochemistry of paraffin-embedded Rat brain using SUMO1 Antibody (1/200 dilution, 40x lens).



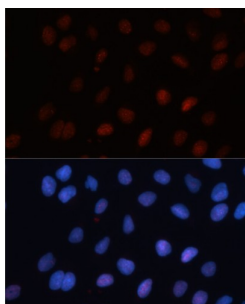
Immunohistochemistry of paraffin-embedded Mouse testis using SUMO1 Antibody (1/200 dilution, 40x lens).



Immunofluorescence analysis of C6 cells using SUMO1 Antibody (1/100 dilution). Blue: DAPI for nuclear staining.



Immunofluorescence analysis of NIH-3T3 cells using SUMO1 Antibody (1/100 dilution). Blue: DAPI for nuclear staining.



Immunofluorescence analysis of U-2 OS cells using SUMO1 Antibody (1/100 dilution). Blue: DAPI for nuclear staining.

SUMO1 Antibody is a Rabbit Polyclonal antibody against SUMO1. This gene encodes a protein that is a member of the SUMO (small ubiquitin-like modifier) protein family. It functions in a manner similar to ubiquitin in that it is bound to target proteins as part of a post-translational modification system. However, unlike ubiquitin which targets proteins for degradation, this protein is involved in a variety of cellular processes, such as nuclear transport, transcriptional regulation, apoptosis, and protein stability. It is not active until the last four amino acids of the carboxy-terminus have been cleaved off. Several pseudogenes have been reported for this gene. Alternate transcriptional splice variants encoding different isoforms have been characterized.

Target: Small Ubiquitin Related Modifier Protein 1 (SUMO1)

Clonality: Polyclonal

Reactivity: Human, Mouse, Rat

Tested Applications: WB, IHC, IF/ICC

Host: Rabbit

Recommended dilutions: WB: 1/500 - 1/2000, IHC-P: 1/50 - 1/100, IF/ICC: 1/50 - 1/200. Not tested in IHC-F. Optimal dilutions/concentrations should be determined by the end user.

Conjugation: Unconjugated

Immunogen: Recombinant fusion protein corresponding to human SUMO1

Isotype: IgG

Form: Liquid

Datasheet

Version: 5.0.0
Revision date: 12 Sep 2025



Purification:	Purified by affinity chromatography.
Storage:	Aliquot and store at -20°C. Avoid repeated freeze/thaw cycles.
UniProt Primary AC:	P63165 (UniProt , ExPASy)
Gene Symbol:	SUMO1
GeneID:	7341
NCBI Accession:	NP_003343.1
KEGG:	hsa:7341
String:	9606.ENSP00000376077
Molecular Weight:	Calculated MW: 8 kDa/11 kDa Observed MW: 90 kDa
Buffer:	PBS, pH 7.3, containing 0.02% sodium azide, 50% glycerol.
Concentration:	1 mg/ml
Note:	THIS PRODUCT IS FOR RESEARCH USE ONLY. NOT FOR USE IN DIAGNOSTIC, THERAPEUTIC OR COSMETIC PROCEDURES. NOT FOR HUMAN OR ANIMAL CONSUMPTION.