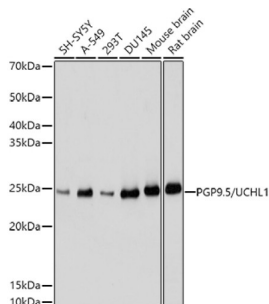
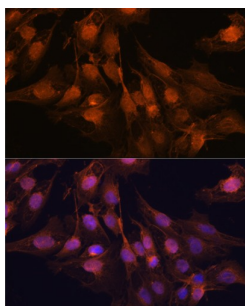


Ubiquitin Carboxyl Terminal Hydrolase L1 (UCHL1) Antibody

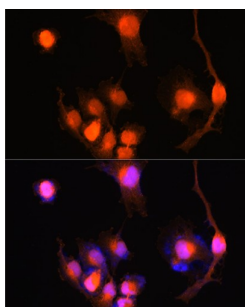
Catalogue No.: abx001743



Western blot analysis of various lysates using PGP9.5/UCHL1 Antibody at 1/1000 dilution. Secondary antibody: HRP-conjugated Goat anti-Rabbit IgG (H+L) at 1/10000 dilution. Lysates/proteins: 25 µg per lane. Blocking buffer: 3% nonfat dry milk in TBST. Exposure time: 1s.



Immunofluorescence analysis of C6 cells using PGP9.5/UCHL1 Antibody at dilution of 1/100 (40x lens). Secondary antibody: Cy3-conjugated Goat anti-Rabbit IgG (H+L) at 1/500 dilution. Blue: DAPI for nuclear staining.



Immunofluorescence analysis of U-251 MG cells using PGP9.5/UCHL1 Antibody at dilution of 1/100 (40x lens). Secondary antibody: Cy3-conjugated Goat anti-Rabbit IgG (H+L) at 1/500 dilution. Blue: DAPI for nuclear staining.

UCHL1 Antibody is a Rabbit Polyclonal antibody against UCHL1. The protein encoded by this gene belongs to the peptidase C12 family. This enzyme is a thiol protease that hydrolyzes a peptide bond at the C-terminal glycine of ubiquitin. This gene is specifically expressed in the neurons and in cells of the diffuse neuroendocrine system. Mutations in this gene may be associated with Parkinson disease.

Target: Ubiquitin Carboxyl Terminal Hydrolase L1 (UCHL1)

Clonality: Polyclonal

Reactivity: Human, Mouse, Rat

Tested Applications: ELISA, WB, IF/ICC

Host: Rabbit

Recommended dilutions: ELISA: 1 µg/ml, WB: 1/500 - 1/1000, IF/ICC: 1/50 - 1/200. Optimal dilutions/concentrations should be determined by the end user.

Datasheet

Version: 6.0.0
Revision date: 02 Sep 2025



Conjugation:	Unconjugated
Immunogen:	Recombinant protein corresponding to UCHL1. The exact sequence is proprietary.
Isotype:	IgG
Form:	Liquid
Purification:	Purified by affinity chromatography.
Storage:	Aliquot and store at -20°C. Avoid repeated freeze/thaw cycles.
UniProt Primary AC:	P09936 (UniProt , ExPASy)
Gene Symbol:	UCHL1
GeneID:	7345
NCBI Accession:	NP_004172.2
KEGG:	hsa:7345
String:	9606.ENSP00000284440
Molecular Weight:	Calculated MW: 25 kDa Observed MW: 27 kDa
Buffer:	PBS, pH 7.3, containing 0.01% thimerosal, 50% glycerol.
Concentration:	> 0.2 mg/ml
Note:	THIS PRODUCT IS FOR RESEARCH USE ONLY. NOT FOR USE IN DIAGNOSTIC, THERAPEUTIC OR COSMETIC PROCEDURES. NOT FOR HUMAN OR ANIMAL CONSUMPTION.