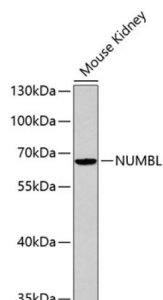


NUMB Like, Endocytic Adaptor Protein (NUMBL) Antibody

Catalogue No.: abx001752



Western blot analysis of lysates from Mouse kidney, using NUMBL Antibody. Secondary antibody: HRP-conjugated Goat anti-Rabbit IgG (H+L) at 1/10000 dilution. Lysates/proteins: 25 µg per lane. Blocking buffer: 3% nonfat dry milk in TBST.

NUMBL Antibody is a Rabbit Polyclonal antibody against NUMBL. Numb-like (Numbl or Nbl) binds Notch and is an intracellular modulator of Notch signaling pathway. Numbl contains a phosphotyrosine binding (PTB) domain that could bind the Y682 motif present in the cytoplasmic tail of APP. Deduced molecular weight of Numbl is 72 kDa.

Target:	NUMB Like, Endocytic Adaptor Protein (NUMBL)
Clonality:	Polyclonal
Reactivity:	Human, Mouse
Tested Applications:	ELISA, WB
Host:	Rabbit
Recommended dilutions:	ELISA: 1 µg/ml, WB: 1/500 - 1/2000. Optimal dilutions/concentrations should be determined by the end user.
Conjugation:	Unconjugated
Immunogen:	Recombinant fusion protein containing a sequence corresponding to amino acids 330-609 of human NUMBL.
Isotype:	IgG
Form:	Liquid
Purification:	Purified by affinity chromatography.
Storage:	Aliquot and store at -20°C. Avoid repeated freeze/thaw cycles.
UniProt Primary AC:	Q9Y6R0 (UniProt , ExPASy)
Gene Symbol:	NUMBL

Datasheet

Version: 4.0.0

Revision date: 25 Aug 2025



GeneID: [9253](#)

NCBI Accession: NP_004747.1

String: [9606.ENSP00000252891](#)

Molecular Weight: Calculated MW: 65 kDa
Observed MW: 65 kDa

Buffer: PBS, pH 7.3, containing 0.02% sodium azide, 50% glycerol.

Concentration: > 0.2 mg/ml

Note: THIS PRODUCT IS FOR RESEARCH USE ONLY. NOT FOR USE IN DIAGNOSTIC, THERAPEUTIC OR COSMETIC PROCEDURES. NOT FOR HUMAN OR ANIMAL CONSUMPTION.

For Reference Only