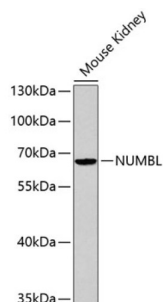


## NUMB Like, Endocytic Adaptor Protein (NUMBL) Antibody

Catalogue No.: abx001752



Western blot analysis of lysates from Mouse kidney, using NUMBL Antibody. Secondary antibody: HRP-conjugated Goat anti-Rabbit IgG (H+L) at 1/10000 dilution. Lysates/proteins: 25 µg per lane. Blocking buffer: 3% nonfat dry milk in TBST.

NUMBL Antibody is a Rabbit Polyclonal antibody against NUMBL. Numb-like (Numbl or Nbl) binds Notch and is an intracellular modulator of Notch signaling pathway. Numbl contains a phosphotyrosine binding (PTB) domain that could bind the Y682 motif present in the cytoplasmic tail of APP. Deduced molecular weight of Numbl is 72 kDa.

<b>Target:</b>	NUMB Like, Endocytic Adaptor Protein (NUMBL)
<b>Clonality:</b>	Polyclonal
<b>Reactivity:</b>	Human, Mouse
<b>Tested Applications:</b>	ELISA, WB
<b>Host:</b>	Rabbit
<b>Recommended dilutions:</b>	ELISA: 1 µg/ml, WB: 1/500 - 1/2000. Optimal dilutions/concentrations should be determined by the end user.
<b>Conjugation:</b>	Unconjugated
<b>Immunogen:</b>	Recombinant fusion protein containing a sequence corresponding to amino acids 330-609 of human NUMBL.
<b>Isotype:</b>	IgG
<b>Form:</b>	Liquid
<b>Purification:</b>	Purified by affinity chromatography.
<b>Storage:</b>	Aliquot and store at -20°C. Avoid repeated freeze/thaw cycles.
<b>UniProt Primary AC:</b>	Q9Y6R0 ( <a href="#">UniProt</a> , <a href="#">ExPASy</a> )
<b>Gene Symbol:</b>	NUMBL

# Datasheet

Version: 4.0.0

Revision date: 12 Mar 2025



**GeneID:** [9253](#)

**NCBI Accession:** NP\_004747.1

**String:** [9606.ENSP00000252891](#)

**Molecular Weight:** Calculated MW: 65 kDa  
Observed MW: 65 kDa

**Buffer:** PBS, pH 7.3, containing 0.02% sodium azide, 50% glycerol.

**Concentration:** > 0.2 mg/ml

**Note:** THIS PRODUCT IS FOR RESEARCH USE ONLY. NOT FOR USE IN DIAGNOSTIC, THERAPEUTIC OR COSMETIC PROCEDURES. NOT FOR HUMAN OR ANIMAL CONSUMPTION.

For Reference Only