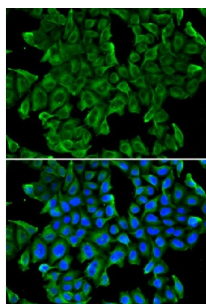


Regenerating Islet Derived Protein 3 Gamma (REG3G) Antibody

Catalogue No.: abx001758



Immunofluorescence analysis of MCF-7 cells using REG3G Antibody

REG3G Antibody is a Rabbit Polyclonal antibody against REG3G. The regeneration (REG) family consists of secretory proteins involved in liver, pancreatic, gastric and intestinal cell proliferation or differentiation. Members of the REG family are divided into four subclasses, designated types I, II, III and IV, all of which share a common gene structure containing five introns and six exons. Members of the Reg family have been implicated in the regulation of cell growth, tumorigenesis and the progression of cancer. REG3G (regenerating islet-derived 3 gamma), also known as pancreatitis-associated protein 1B, PAP1B, or UNQ429, is a 175 amino acid secreted protein that is expressed almost exclusively in pancreas, with low levels of expression in testis. REG3G functions as an antimicrobial protein involved in controlling bacterial proliferation and may be induced during acute pancreatitis. The gene encoding REG3G maps to human chromosome 2, which houses over 1,400 genes and comprises nearly 8% of the human genome.

Target:	Regenerating Islet Derived Protein 3 Gamma (REG3G)
Clonality:	Polyclonal
Reactivity:	Human, Mouse, Rat
Tested Applications:	IF/ICC
Host:	Rabbit
Recommended dilutions:	IF/ICC: 1/10 - 1/100. Optimal dilutions/concentrations should be determined by the end user.
Conjugation:	Unconjugated
Immunogen:	Recombinant protein corresponding to mouse REG3G
Isotype:	IgG
Form:	Liquid
Purification:	Purified by affinity chromatography.
Storage:	Aliquot and store at -20°C. Avoid repeated freeze/thaw cycles.

Datasheet

Version: 4.0.0

Revision date: 19 Aug 2025



UniProt Primary AC: O09049 ([UniProt](#), [ExPASy](#))

Gene Symbol: REG3G

GeneID: [130120](#)

NCBI Accession: NP_035390.1

KEGG: mmu:19695

String: [10090.ENSMUSP00000032089](#)

Buffer: PBS, pH 7.3, containing 0.02% sodium azide, 50% glycerol.

Concentration: 1 mg/ml

Note: THIS PRODUCT IS FOR RESEARCH USE ONLY. NOT FOR USE IN DIAGNOSTIC, THERAPEUTIC OR COSMETIC PROCEDURES. NOT FOR HUMAN OR ANIMAL CONSUMPTION.

For Reference Only