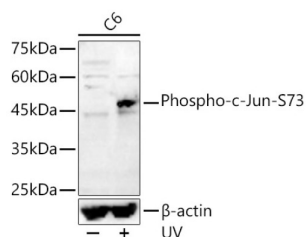
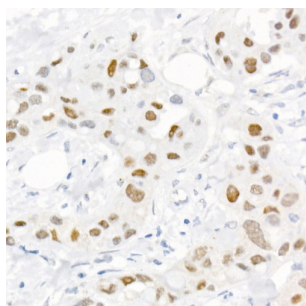


## c-Jun (pS73) Antibody

Catalogue No.: abx000132



Western blot analysis of lysates from C6 cells, using Phospho-c-Jun-S73 Antibody at 1/400 dilution. C6 cells were treated by UV at room temperature for 15-30 minutes. Secondary antibody: HRP-conjugated Goat anti-Rabbit IgG (H+L) at 1/10000 dilution. Lysates/proteins: 25 µg per lane. Blocking buffer: 3% nonfat dry milk in TBST. Exposure time: 180s.



Immunohistochemistry analysis of paraffin-embedded Human breast cancer using Phospho-c-Jun-S73 Antibody at dilution of 1/20 (40x lens). High pressure antigen retrieval performed in 0.01 M Citrate buffer (pH 6.0) prior to IHC staining.

c-Jun (pS73) Antibody is a Rabbit Polyclonal antibody against c-Jun (pS73). c-Jun is a member of the Jun Family containing c-Jun, JunB and JunD, and is a component of the transcription factor AP-1 (activator protein-1). AP-1 is composed of dimers of Fos, Jun and ATF family members and binds to and activates transcription at TRE/AP-1 elements (reviewed in 1). Extracellular signals including growth factors, chemokines and stress activate AP-1-dependent transcription. The transcriptional activity of c-Jun is regulated by phosphorylation at Ser63 and Ser73 through SAPK/JNK (reviewed in 2). Knock-out studies in mice have shown that c-Jun is essential for embryogenesis (3), and subsequent studies have demonstrated roles for c-Jun in various tissues and developmental processes including axon regeneration (4), liver regeneration (5) and T cell development (6). AP-1 regulated genes exert diverse biological functions including cell proliferation, differentiation, and apoptosis, as well as transformation, invasion and metastasis, depending on cell type and context (7-9). Other target genes regulate survival as well as hypoxia and angiogenesis (8,10). c-Jun has emerged as a promising therapeutic target for cancer, vascular remodeling, acute inflammation, as well as rheumatoid arthritis (11,12).

**Target:** c-Jun (pS73)

**Clonality:** Polyclonal

**Reactivity:** Human, Mouse, Rat

**Tested Applications:** ELISA, WB, IHC

**Host:** Rabbit

**Recommended dilutions:** ELISA: 1 µg/ml, WB: 1/100 - 1/500, IHC-P: 1/50 - 1/200. Not tested in IHC-F. Optimal dilutions/concentrations should be determined by the end user.

**Conjugation:** Unconjugated

# Datasheet

Version: 4.0.0  
Revision date: 05 Jun 2025



<b>Immunogen:</b>	A synthetic phosphorylated peptide around S73 of human c-Jun.
<b>Isotype:</b>	IgG
<b>Form:</b>	Liquid
<b>Purification:</b>	Purified by affinity chromatography.
<b>Storage:</b>	Aliquot and store at -20°C. Avoid repeated freeze/thaw cycles.
<b>UniProt Primary AC:</b>	P05412 ( <a href="#">UniProt</a> , <a href="#">ExPASy</a> )
<b>Gene Symbol:</b>	JUN
<b>GeneID:</b>	<a href="#">3725</a>
<b>NCBI Accession:</b>	NP_002219.1
<b>KEGG:</b>	hsa:3725
<b>String:</b>	<a href="#">9606.ENSP00000360266</a>
<b>Molecular Weight:</b>	Calculated MW: 36 kDa Observed MW: 45-48 kDa
<b>Buffer:</b>	PBS, pH 7.3, containing 0.05% Proclin-300, 50% glycerol.
<b>Concentration:</b>	> 0.2 mg/ml
<b>Note:</b>	THIS PRODUCT IS FOR RESEARCH USE ONLY. NOT FOR USE IN DIAGNOSTIC, THERAPEUTIC OR COSMETIC PROCEDURES. NOT FOR HUMAN OR ANIMAL CONSUMPTION.