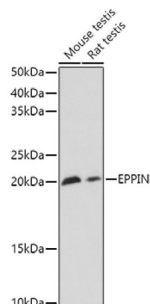


Serine Protease Inhibitor-Like With Kunitz And WAP Domains 1 (SPINLW1) Antibody

Catalogue No.: abx001761



Western blot analysis of various lysates using EPPIN Antibody at 1/1000 dilution. Secondary antibody: HRP-conjugated Goat anti-Rabbit IgG (H+L) at 1/10000 dilution. Lysates/proteins: 25 µg per lane. Blocking buffer: 3% nonfat dry milk in TBST. Exposure time: 180s.

SPINLW1 Antibody is a Rabbit Polyclonal antibody against SPINLW1. This gene encodes an epididymal protease inhibitor, which contains both kunitz-type and WAP-type four-disulfide core (WFDC) protease inhibitor consensus sequences. Most WFDC genes are localized to chromosome 20q12-q13 in two clusters: centromeric and telomeric. This gene is a member of the WFDC gene family and belongs to the telomeric cluster. The protein can inhibit human sperm motility, and polymorphisms in this gene are associated with male infertility. Read-through transcription also exists between this gene and the downstream WFDC6 (WAP four-disulfide core domain 6) gene. [provided by RefSeq, Nov 2010].

Target:	Serine Protease Inhibitor-Like With Kunitz And WAP Domains 1 (SPINLW1)
Clonality:	Polyclonal
Reactivity:	Human, Mouse, Rat
Tested Applications:	ELISA, WB
Host:	Rabbit
Recommended dilutions:	ELISA: 1 µg/ml, WB: 1/500 - 1/1000. Optimal dilutions/concentrations should be determined by the end user.
Conjugation:	Unconjugated
Immunogen:	Recombinant protein corresponding to SPINLW1. The exact sequence is proprietary.
Isotype:	IgG
Form:	Liquid
Purification:	Purified by affinity chromatography.
Storage:	Aliquot and store at -20°C. Avoid repeated freeze/thaw cycles.

Datasheet

Version: 6.0.0
Revision date: 29 Jul 2025



UniProt Primary AC: O95925 ([UniProt](#), [ExPASy](#))

Gene Symbol: EPPIN

GeneID: [57119](#)

NCBI Accession: NP_065131.1

KEGG: hsa:100526773, hsa:57119

String: [9606.ENSP00000361746](#)

Molecular Weight: Calculated MW: 15 kDa
Observed MW: 20 kDa

Buffer: PBS, pH 7.3, containing 0.09% sodium azide, 50% glycerol.

Concentration: 2.74 mg/ml

Note: THIS PRODUCT IS FOR RESEARCH USE ONLY. NOT FOR USE IN DIAGNOSTIC, THERAPEUTIC OR COSMETIC PROCEDURES. NOT FOR HUMAN OR ANIMAL CONSUMPTION.

For Reference Only