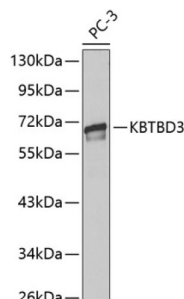


## Kelch Repeat And BTB Domain-Containing Protein 3 (KBTBD3) Antibody

Catalogue No.: abx001764



Western blot analysis of extracts of PC-3 cells using KBTBD3 Antibody.

KBTBD3 Antibody is a Rabbit Polyclonal antibody against KBTBD3. The BTB (Broad-Complex, Tramtrack and Bric a brac) domain, also known as the POZ (Poxvirus and Zinc finger) domain, is an N-terminal homodimerization domain that contains multiple copies of kelch repeats and/or C2H2-type zinc fingers. Proteins that contain BTB domains are thought to be involved in transcriptional regulation via control of chromatin structure and function. KBTBD3 (kelch repeat and BTB domain-containing protein 3), also known as BKLHD3, is a 608 amino acid protein that contains one BACK (BTB/Kelch associated) domain, one BTB (POZ) domain and five kelch repeats. The gene encoding KBTBD3 maps to human chromosome 11, which houses over 1,400 genes and comprises nearly 4% of the human genome. Jervell and Lange-Nielsen syndrome, Jacobsen syndrome, Niemann-Pick disease, hereditary angioedema and Smith-Lemli-Opitz syndrome are associated with defects in genes that maps to chromosome 11.

**Target:** Kelch Repeat And BTB Domain-Containing Protein 3 (KBTBD3)

**Clonality:** Polyclonal

**Reactivity:** Human

**Tested Applications:** WB

**Host:** Rabbit

**Recommended dilutions:** WB: 1/500 - 1/2000. Optimal dilutions/concentrations should be determined by the end user.

**Conjugation:** Unconjugated

**Immunogen:** Recombinant fusion protein corresponding to mouse KBTBD3

**Isotype:** IgG

**Form:** Liquid

**Purification:** Purified by affinity chromatography.

# Datasheet

Version: 3.0.0  
Revision date: 12 Oct 2025



**Storage:** Aliquot and store at -20°C. Avoid repeated freeze/thaw cycles.

**UniProt Primary AC:** Q8NAB2 ([UniProt](#), [ExPASy](#))

**Gene Symbol:** KBTBD3

**GeneID:** [143879](#)

**NCBI Accession:** NP\_081238.2

**KEGG:** hsa:143879

**String:** [9606.ENSP00000436262](#)

**Molecular Weight:** Calculated MW: 69 kDa  
Observed MW: 69 kDa

**Buffer:** PBS, pH 7.3, containing 0.02% sodium azide, 50% glycerol.

**Concentration:** 1 mg/ml

**Note:** THIS PRODUCT IS FOR RESEARCH USE ONLY. NOT FOR USE IN DIAGNOSTIC, THERAPEUTIC OR COSMETIC PROCEDURES. NOT FOR HUMAN OR ANIMAL CONSUMPTION.

For Reference Only