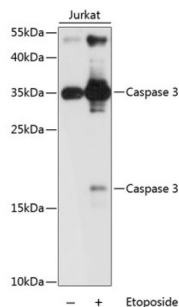
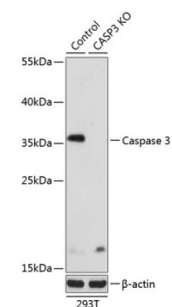


## Caspase 3 (CASP3) Antibody

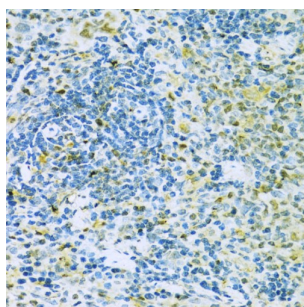
Catalogue No.: abx001768



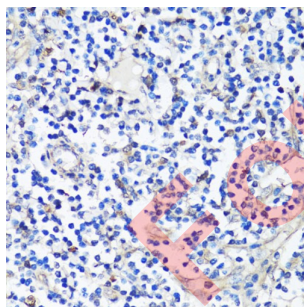
Western blot analysis of extracts of Jurkat cells using Caspase-3 Antibody (1/1000 dilution).



Western blot analysis of extracts from normal (control) and Caspase-3 knockout (KO) 293T cells using Caspase-3 Antibody (1/1000 dilution).



Immunohistochemistry of paraffin-embedded Rat spleen using Caspase-3 Antibody (1/100 dilution, 40x lens).



Immunohistochemistry of paraffin-embedded Human tonsil using Caspase-3 Antibody (1/100 dilution, 40x lens).

CASP3 Antibody is a Rabbit Polyclonal antibody against CASP3. This gene encodes a protein which is a member of the cysteine-aspartic acid protease (caspase) family. Sequential activation of caspases plays a central role in the execution-phase of cell apoptosis. Caspases exist as inactive proenzymes which undergo proteolytic processing at conserved aspartic residues to produce two subunits, large and small, that dimerize to form the active enzyme. This protein cleaves and activates caspases 6, 7 and 9, and the protein itself is processed by caspases 8, 9 and 10. It is the predominant caspase involved in the cleavage of amyloid-beta 4A precursor protein, which is associated with neuronal death in Alzheimer's disease. Alternative splicing of this gene results in two transcript variants that encode the same protein.

# Datasheet

Version: 6.0.0  
Revision date: 14 Jun 2025



<b>Target:</b>	Caspase 3 (CASP3)
<b>Clonality:</b>	Polyclonal
<b>Reactivity:</b>	Human, Mouse, Rat
<b>Tested Applications:</b>	WB, IHC
<b>Host:</b>	Rabbit
<b>Recommended dilutions:</b>	WB: 1/500 - 1/2000, IHC-P: 1/50 - 1/200. Not tested in IHC-F. Optimal dilutions/concentrations should be determined by the end user.
<b>Conjugation:</b>	Unconjugated
<b>Immunogen:</b>	Recombinant fusion protein corresponding to human Caspase-3
<b>Isotype:</b>	IgG
<b>Form:</b>	Liquid
<b>Purification:</b>	Purified by affinity chromatography.
<b>Storage:</b>	Aliquot and store at -20°C. Avoid repeated freeze/thaw cycles.
<b>UniProt Primary AC:</b>	P42574 ( <a href="#">UniProt</a> , <a href="#">ExPASy</a> )
<b>Gene Symbol:</b>	CASP3
<b>GeneID:</b>	<a href="#">836</a>
<b>NCBI Accession:</b>	NP_004337.2
<b>KEGG:</b>	hsa:836
<b>String:</b>	<a href="#">9606.ENSP00000311032</a>
<b>Molecular Weight:</b>	Calculated MW: 31 kDa Observed MW: 17 kDa/35 kDa
<b>Buffer:</b>	PBS, pH 7.3, containing 0.02% sodium azide, 50% glycerol.
<b>Concentration:</b>	1 mg/ml

# Datasheet

Version: 6.0.0

Revision date: 14 Jun 2025



**Note:**

THIS PRODUCT IS FOR RESEARCH USE ONLY. NOT FOR USE IN DIAGNOSTIC, THERAPEUTIC OR COSMETIC PROCEDURES. NOT FOR HUMAN OR ANIMAL CONSUMPTION.

For Reference Only