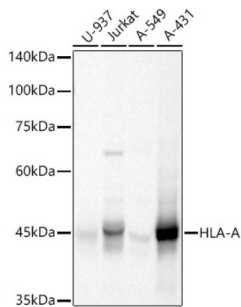
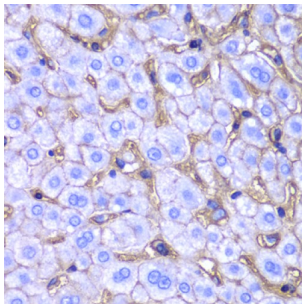


## HLA class I histocompatibility antigen, A alpha chain (HLA-A) Antibody

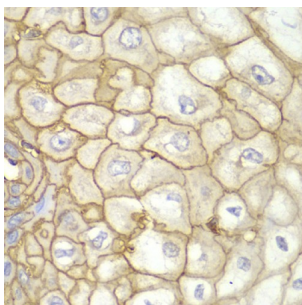
Catalogue No.: abx001779



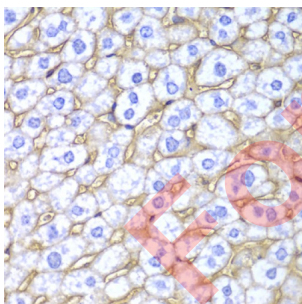
Western blot analysis of extracts of various lysates using HLA-A Antibody (1/1000 dilution).



Immunohistochemistry of paraffin-embedded human liver damage using HLA-A Antibody (1/100 dilution, 40x lens). Microwave antigen retrieval was performed in 10 mM PBS buffer pH 7.2 before commencing with IHC staining protocol.



Immunohistochemistry of paraffin-embedded human esophagus using HLA-A antibody (1/100 dilution, 40x lens). Microwave antigen retrieval was performed in 10 mM PBS buffer pH 7.2 before commencing with IHC staining protocol.



Immunohistochemistry of paraffin-embedded mouse liver using HLA-A antibody (1/100 dilution, 40x lens). Microwave antigen retrieval was performed in 10 mM PBS buffer pH 7.2 before commencing with IHC staining protocol.

HLA-A Antibody is a Rabbit Polyclonal antibody against HLA-A. Human HLA class I histocompatibility antigen, A alpha chain (HLA-A), also referred to as human leukocyte antigens (HLA), are encoded by genes located on the short arm of chromosome 6 (6p21.3). There are two classes of HLA antigens: class I (HLA-A, B and C) and class II (HLA-D). This class I molecules are polymorphic membrane glycoproteins composed of a heavy (alpha) chain (44 kDa) which is encoded by a HLA class I gene (HLA-A, B or C), and  $\beta$ 2-microglobulin light (beta) chain (12 kDa). They are involved in the presentation of foreign antigens to the immune system. (PMID: 667938; 3375250).

**Target:**

HLA class I histocompatibility antigen, A alpha chain (HLA-A)

# Datasheet

Version: 5.0.0  
Revision date: 23 Aug 2025



<b>Clonality:</b>	Polyclonal
<b>Reactivity:</b>	Human
<b>Tested Applications:</b>	WB, IHC
<b>Host:</b>	Rabbit
<b>Recommended dilutions:</b>	WB: 1/500 - 1/2000, IHC-P: 1/50 - 1/20. Not tested in IHC-F. Optimal dilutions/concentrations should be determined by the end user.
<b>Conjugation:</b>	Unconjugated
<b>Immunogen:</b>	Recombinant fusion protein corresponding to human HLA-A
<b>Isotype:</b>	IgG
<b>Form:</b>	Liquid
<b>Purification:</b>	Purified by affinity chromatography.
<b>Storage:</b>	Aliquot and store at -20°C. Avoid repeated freeze/thaw cycles.
<b>UniProt Primary AC:</b>	P04439 ( <a href="#">UniProt</a> , <a href="#">ExPASy</a> )
<b>Gene Symbol:</b>	HLA-A
<b>GeneID:</b>	<a href="#">3105</a>
<b>NCBI Accession:</b>	NP_002107.3
<b>Molecular Weight:</b>	Calculated MW: 40 kDa Observed MW: 45 kDa
<b>Buffer:</b>	PBS, pH 7.3, containing 0.05% Proclin-300, 50% glycerol.
<b>Concentration:</b>	1 mg/ml
<b>Note:</b>	THIS PRODUCT IS FOR RESEARCH USE ONLY. NOT FOR USE IN DIAGNOSTIC, THERAPEUTIC OR COSMETIC PROCEDURES. NOT FOR HUMAN OR ANIMAL CONSUMPTION.