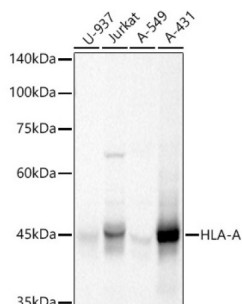
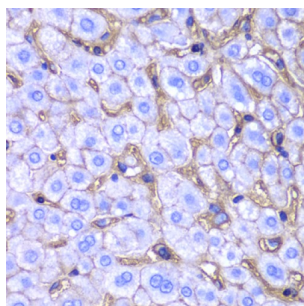


HLA class I histocompatibility antigen, A alpha chain (HLA-A) Antibody

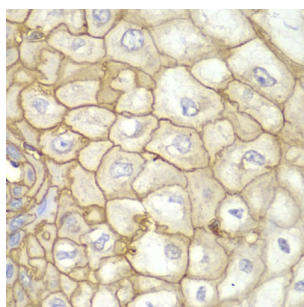
Catalogue No.: abx001779



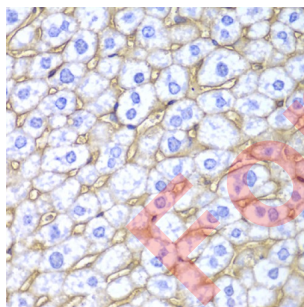
Western blot analysis of extracts of various lysates using HLA-A Antibody (1/1000 dilution).



Immunohistochemistry of paraffin-embedded human liver damage using HLA-A Antibody (1/100 dilution, 40x lens). Microwave antigen retrieval was performed in 10 mM PBS buffer pH 7.2 before commencing with IHC staining protocol.



Immunohistochemistry of paraffin-embedded human esophagus using HLA-A antibody (1/100 dilution, 40x lens). Microwave antigen retrieval was performed in 10 mM PBS buffer pH 7.2 before commencing with IHC staining protocol.



Immunohistochemistry of paraffin-embedded mouse liver using HLA-A antibody (1/100 dilution, 40x lens). Microwave antigen retrieval was performed in 10 mM PBS buffer pH 7.2 before commencing with IHC staining protocol.

HLA-A Antibody is a Rabbit Polyclonal antibody against HLA-A. Human HLA class I histocompatibility antigen, A alpha chain (HLA-A), also referred to as human leukocyte antigens (HLA), are encoded by genes located on the short arm of chromosome 6 (6p21.3). There are two classes of HLA antigens: class I (HLA-A, B and C) and class II (HLA-D). This class I molecules are polymorphic membrane glycoproteins composed of a heavy (alpha) chain (44 kDa) which is encoded by a HLA class I gene (HLA-A, B or C), and β 2-microglobulin light (beta) chain (12 kDa). They are involved in the presentation of foreign antigens to the immune system. (PMID: 667938; 3375250).

Target:

HLA class I histocompatibility antigen, A alpha chain (HLA-A)

Datasheet

Version: 5.0.0
Revision date: 18 Mar 2025



Clonality:	Polyclonal
Reactivity:	Human
Tested Applications:	WB, IHC
Host:	Rabbit
Recommended dilutions:	WB: 1/500 - 1/2000, IHC-P: 1/50 - 1/20. Not tested in IHC-F. Optimal dilutions/concentrations should be determined by the end user.
Conjugation:	Unconjugated
Immunogen:	Recombinant fusion protein corresponding to human HLA-A
Isotype:	IgG
Form:	Liquid
Purification:	Purified by affinity chromatography.
Storage:	Aliquot and store at -20°C. Avoid repeated freeze/thaw cycles.
UniProt Primary AC:	P04439 (UniProt , ExPASy)
Gene Symbol:	HLA-A
GeneID:	3105
NCBI Accession:	NP_002107.3
Molecular Weight:	Calculated MW: 40 kDa Observed MW: 45 kDa
Buffer:	PBS, pH 7.3, containing 0.05% Proclin-300, 50% glycerol.
Concentration:	1 mg/ml
Note:	THIS PRODUCT IS FOR RESEARCH USE ONLY. NOT FOR USE IN DIAGNOSTIC, THERAPEUTIC OR COSMETIC PROCEDURES. NOT FOR HUMAN OR ANIMAL CONSUMPTION.