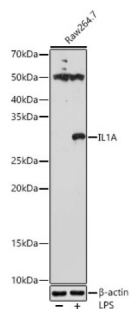


## Interleukin 1 Alpha (IL1A) Antibody

Catalogue No.: abx001782



Western blot analysis of various lysates using at 1/1000 dilution. Raw264. 7 cells were treated by LPS (1 µg/ml) at 37 °C for 8 hours. Secondary antibody: HRP-conjugated Goat anti-Rabbit IgG (H+L) at 1/10000 dilution. Lysates/proteins: 25 µg per lane. Blocking buffer: 3% nonfat dry milk in TBST. Exposure time: 180s.

IL1A Antibody is a Rabbit Polyclonal antibody against IL1A. The protein encoded by this gene is a member of the interleukin 1 cytokine family. This cytokine is a pleiotropic cytokine involved in various immune responses, inflammatory processes, and hematopoiesis. This cytokine is produced by monocytes and macrophages as a proprotein, which is proteolytically processed and released in response to cell injury, and thus induces apoptosis. This gene and eight other interleukin 1 family genes form a cytokine gene cluster on chromosome 2. It has been suggested that the polymorphism of these genes is associated with rheumatoid arthritis and Alzheimer's disease.

<b>Target:</b>	Interleukin 1 Alpha (IL1A)
<b>Clonality:</b>	Polyclonal
<b>Reactivity:</b>	Human, Mouse, Rat
<b>Tested Applications:</b>	ELISA, WB
<b>Host:</b>	Rabbit
<b>Recommended dilutions:</b>	ELISA: 1 µg/ml, WB: 1/500 - 1/1000. Optimal dilutions/concentrations should be determined by the end user.
<b>Conjugation:</b>	Unconjugated
<b>Immunogen:</b>	Recombinant fusion protein containing a sequence corresponding to amino acids 112-271 of human IL-1 alpha.
<b>Isotype:</b>	IgG
<b>Form:</b>	Liquid
<b>Purification:</b>	Purified by affinity chromatography.
<b>Storage:</b>	Aliquot and store at -20°C. Avoid repeated freeze/thaw cycles.
<b>UniProt Primary AC:</b>	P01583 ( <a href="#">UniProt</a> , <a href="#">ExPASy</a> )

# Datasheet

Version: 3.0.0

Revision date: 15 Jun 2025



**Gene Symbol:** IL1A

**GeneID:** [3552](#)

**NCBI Accession:** NP\_000566.3

**KEGG:** hsa:3552

**String:** [9606.ENSP00000263339](#)

**Molecular Weight:** Calculated MW: 31 kDa  
Observed MW: 30 kDa

**Buffer:** PBS, pH 7.3, containing 0.09% sodium azide, 50% glycerol.

**Concentration:** > 0.2 mg/ml

**Note:** THIS PRODUCT IS FOR RESEARCH USE ONLY. NOT FOR USE IN DIAGNOSTIC, THERAPEUTIC OR COSMETIC PROCEDURES. NOT FOR HUMAN OR ANIMAL CONSUMPTION.

For Reference Only