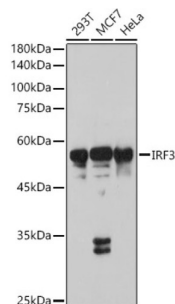
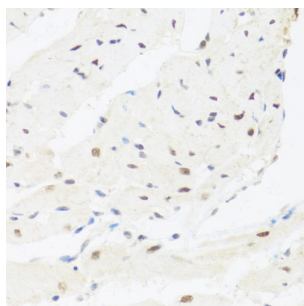


Interferon Regulatory Factor 3 (IRF3) Antibody

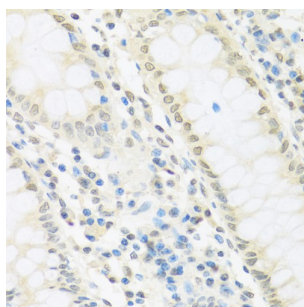
Catalogue No.: abx001784



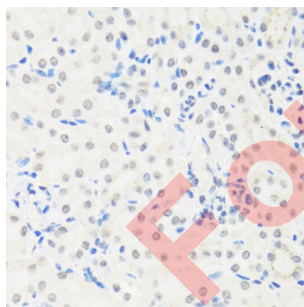
Western blot analysis of lysates from C6 cells using IRF3 Antibody at 1/1000 dilution. Secondary antibody: HRP-conjugated Goat anti-Rabbit IgG (H+L) at 1/10000 dilution. Lysates/proteins: 25 µg per lane. Blocking buffer: 3% nonfat dry milk in TBST. Exposure time: 90s.



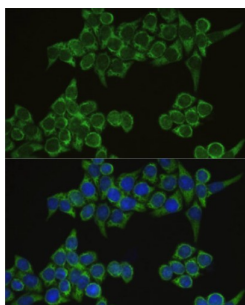
Immunohistochemistry analysis of paraffin-embedded Mouse testis tissue using IRF3 Antibody at a dilution of 1/200 (40x lens). High pressure antigen retrieval was performed in 0.01 M citrate buffer (pH 6.0) prior to IHC staining.



Immunohistochemistry analysis of paraffin-embedded Rat heart tissue using IRF3 Antibody at a dilution of 1/200 (40x lens). High pressure antigen retrieval was performed in 0.01 M citrate buffer (pH 6.0) prior to IHC staining.



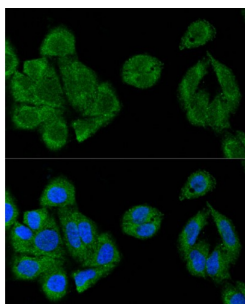
Immunofluorescence analysis of HeLa cells using IRF3 Antibody at dilution of 1/100. Secondary antibody: Cy3-conjugated Goat anti-Rabbit IgG (H+L) at 1/500 dilution. Blue: DAPI for nuclear staining.



Confocal immunofluorescence analysis of U-2 OS cells using IRF3 Antibody at dilution of 1/100. Blue: DAPI for nuclear staining.

Datasheet

Version: 4.0.0
Revision date: 27 Jun 2025



Immunoprecipitation analysis of 300 µg extracts of 293T cells using 3 µg IRF3 antibody. Western blot was performed from the immunoprecipitate using IRF3 antibody at a dilution of 1/1000.

IRF3 Antibody is a Rabbit Polyclonal antibody against IRF3. This gene encodes a member of the interferon regulatory transcription factor (IRF) family. The encoded protein is found in an inactive cytoplasmic form that upon serine/threonine phosphorylation forms a complex with CREBBP. This complex translocates to the nucleus and activates the transcription of interferons alpha and beta, as well as other interferon-induced genes. Alternatively spliced transcript variants encoding multiple isoforms have been observed for this gene.

Target:	Interferon Regulatory Factor 3 (IRF3)
Clonality:	Polyclonal
Reactivity:	Human, Mouse, Rat
Tested Applications:	ELISA, WB, IHC, IF/ICC, IP
Host:	Rabbit
Recommended dilutions:	ELISA: 1 µg/ml, WB: 1/500 - 1/1000, IHC-P: 1/50 - 1/200, IF/ICC: 1/50 - 1/200, IP: 0.5 µg - 4 µg antibody per 200 µg - 400 µg extracts of whole cells. Not tested in IHC-F. Optimal dilutions/concentrations should be determined by the end user.
Conjugation:	Unconjugated
Immunogen:	Recombinant fusion protein containing a sequence corresponding to amino acids 100-200 of human IRF3.
Isotype:	IgG
Form:	Liquid
Purification:	Purified by affinity chromatography.
Storage:	Aliquot and store at -20°C. Avoid repeated freeze/thaw cycles.
UniProt Primary AC:	Q14653 (UniProt , ExPASy)
Gene Symbol:	IRF3

Datasheet

Version: 4.0.0

Revision date: 27 Jun 2025



GeneID: [3661](#)

NCBI Accession: NP_001184052.1

KEGG: hsa:3661

String: [9606.ENSP00000471896](#)

Molecular Weight: Calculated MW: 47 kDa
Observed MW: 45-55 kDa

Buffer: PBS, pH 7.3, containing 0.09% sodium azide, 50% glycerol.

Concentration: 1.76 mg/ml

Note: THIS PRODUCT IS FOR RESEARCH USE ONLY. NOT FOR USE IN DIAGNOSTIC, THERAPEUTIC OR COSMETIC PROCEDURES. NOT FOR HUMAN OR ANIMAL CONSUMPTION.

For Reference Only