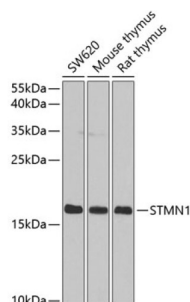


Stathmin 1 (STMN1) Antibody

Catalogue No.: abx001788



Western blot analysis of extracts of various cell lines using STMN1 Antibody (1/1000 dilution).

STMN1 Antibody is a Rabbit Polyclonal antibody against STMN1. This gene belongs to the stathmin family of genes. It encodes a ubiquitous cytosolic phosphoprotein proposed to function as an intracellular relay integrating regulatory signals of the cellular environment. The encoded protein is involved in the regulation of the microtubule filament system by destabilizing microtubules. It prevents assembly and promotes disassembly of microtubules. Multiple transcript variants encoding different isoforms have been found for this gene.

Target: Stathmin 1 (STMN1)

Clonality: Polyclonal

Reactivity: Human, Mouse, Rat

Tested Applications: WB

Host: Rabbit

Recommended dilutions: WB: 1/500 - 1/2000. Optimal dilutions/concentrations should be determined by the end user.

Conjugation: Unconjugated

Immunogen: Recombinant fusion protein corresponding to human STMN1

Isotype: IgG

Form: Liquid

Purification: Purified by affinity chromatography.

Storage: Aliquot and store at -20°C. Avoid repeated freeze/thaw cycles.

UniProt Primary AC: P16949 ([UniProt](#), [ExPASy](#))

Datasheet

Version: 5.0.0

Revision date: 14 Sep 2025



Gene Symbol: STMN1

GeneID: [3925](#)

NCBI Accession: NP_005554.1

KEGG: hsa:3925

String: [9606.ENSP00000410452](#)

Molecular Weight: Calculated MW: 17 kDa/19 kDa
Observed MW: 16 kDa

Buffer: PBS, pH 7.3, containing 0.02% sodium azide, 50% glycerol.

Concentration: 1 mg/ml

Note: THIS PRODUCT IS FOR RESEARCH USE ONLY. NOT FOR USE IN DIAGNOSTIC, THERAPEUTIC OR COSMETIC PROCEDURES. NOT FOR HUMAN OR ANIMAL CONSUMPTION.

For Reference Only