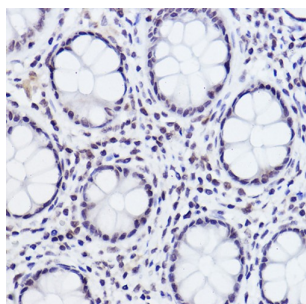
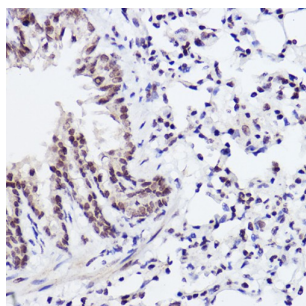


c-Jun (pS243) Antibody

Catalogue No.: abx000135



Immunohistochemistry analysis of paraffin-embedded Human colon carcinoma using Phospho-c-Jun-S243 Antibody at dilution of 1/20 (40x lens). High pressure antigen retrieval performed in 0.01 M Citrate buffer (pH 6.0) prior to IHC staining.



Immunohistochemistry analysis of paraffin-embedded Rat lung using Phospho-c-Jun-S243 Antibody at dilution of 1/20 (40x lens). High pressure antigen retrieval performed in 0.01 M Citrate buffer (pH 6.0) prior to IHC staining.

c-Jun (pS243) Antibody is a Rabbit Polyclonal antibody against c-Jun (pS243). c-Jun is a member of the Jun Family containing c-Jun, JunB and JunD, and is a component of the transcription factor AP-1 (activator protein-1). AP-1 is composed of dimers of Fos, Jun and ATF family members and binds to and activates transcription at TRE/AP-1 elements (reviewed in 1). Extracellular signals including growth factors, chemokines and stress activate AP-1-dependent transcription. The transcriptional activity of c-Jun is regulated by phosphorylation at Ser63 and Ser73 through SAPK/JNK (reviewed in 2). Knock-out studies in mice have shown that c-Jun is essential for embryogenesis (3), and subsequent studies have demonstrated roles for c-Jun in various tissues and developmental processes including axon regeneration (4), liver regeneration (5) and T cell development (6). AP-1 regulated genes exert diverse biological functions including cell proliferation, differentiation, and apoptosis, as well as transformation, invasion and metastasis, depending on cell type and context (7-9). Other target genes regulate survival as well as hypoxia and angiogenesis (8,10). c-Jun has emerged as a promising therapeutic target for cancer, vascular remodeling, acute inflammation, as well as rheumatoid arthritis (11,12).

Target: c-Jun (pS243)

Clonality: Polyclonal

Reactivity: Human, Mouse, Rat

Tested Applications: ELISA, WB, IHC

Host: Rabbit

Recommended dilutions: ELISA: 1 µg/ml, WB: 1/500 - 1/2000, IHC-P: 1/50 - 1/200. Not tested in IHC-F. Optimal dilutions/concentrations should be determined by the end user.

Conjugation: Unconjugated

Datasheet

Version: 5.0.0
Revision date: 18 May 2025



Immunogen:	A synthetic phosphorylated peptide around S243 of human Jun.
Isotype:	IgG
Form:	Liquid
Purification:	Purified by affinity chromatography.
Storage:	Aliquot and store at -20°C. Avoid repeated freeze/thaw cycles.
UniProt Primary AC:	P05412 (UniProt , ExPASy)
Gene Symbol:	JUN
GeneID:	3725
NCBI Accession:	NP_002219.1
KEGG:	hsa:3725
String:	9606.ENSP00000360266
Molecular Weight:	Calculated MW: 36 kDa
Buffer:	PBS, pH 7.3, containing 0.02% sodium azide, 50% glycerol.
Concentration:	> 0.2 mg/ml
Note:	THIS PRODUCT IS FOR RESEARCH USE ONLY. NOT FOR USE IN DIAGNOSTIC, THERAPEUTIC OR COSMETIC PROCEDURES. NOT FOR HUMAN OR ANIMAL CONSUMPTION.