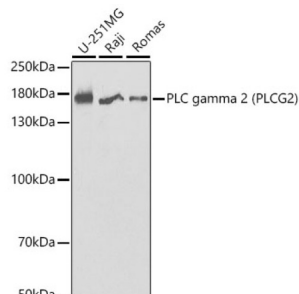
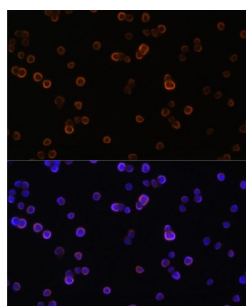


Phospholipase C Gamma 2, Phosphatidylinositol Specific (PLCG2) Antibody

Catalogue No.: abx001794



Western blot analysis of various lysates using PLC gamma 2 (PLCG2) Antibody at 1/1000 dilution. Secondary antibody: HRP-conjugated Goat anti-Rabbit IgG (H+L) at 1/10000 dilution. Lysates/proteins: 25 µg per lane. Blocking buffer: 3% nonfat dry milk in TBST.



Immunofluorescence analysis of Raw264.7 cells using PLC gamma 2 (PLCG2) Antibody at dilution of 1/100. Secondary antibody: Cy3-conjugated Goat anti-Rabbit IgG (H+L) at 1/500 dilution. Blue: DAPI for nuclear staining.

PLCG2 Antibody is a Rabbit Polyclonal antibody against PLCG2. The protein encoded by this gene is a transmembrane signaling enzyme that catalyzes the conversion of 1-phosphatidyl-1D-myo-inositol 4,5-bisphosphate to 1D-myo-inositol 1,4,5-trisphosphate (IP3) and diacylglycerol (DAG) using calcium as a cofactor. IP3 and DAG are second messenger molecules important for transmitting signals from growth factor receptors and immune system receptors across the cell membrane. Mutations in this gene have been found in autoinflammation, antibody deficiency, and immune dysregulation syndrome and familial cold autoinflammatory syndrome 3.

Target: Phospholipase C Gamma 2, Phosphatidylinositol Specific (PLCG2)

Clonality: Polyclonal

Reactivity: Human, Mouse

Tested Applications: ELISA, WB, IF/ICC

Host: Rabbit

Recommended dilutions: ELISA: 1 µg/ml, WB: 1/500 - 1/2000, IF/ICC: 1/20 - 1/100. Optimal dilutions/concentrations should be determined by the end user.

Conjugation: Unconjugated

Immunogen: Recombinant fusion protein containing a sequence corresponding to amino acids 1-300 of human PLC gamma 2 (PLCG2).

Datasheet

Version: 4.0.0
Revision date: 01 May 2025



| | |
|---------------------|--|
| Isotype: | IgG |
| Form: | Liquid |
| Purification: | Purified by affinity chromatography. |
| Storage: | Aliquot and store at -20°C. Avoid repeated freeze/thaw cycles. |
| UniProt Primary AC: | P16885 (UniProt , ExPASy) |
| Gene Symbol: | PLCG2 |
| GeneID: | 5336 |
| NCBI Accession: | NP_002652.2 |
| KEGG: | hsa:5336 |
| String: | 9606.ENSP00000482457 |
| Molecular Weight: | Calculated MW: 148 kDa Observed MW: 175 kDa |
| Buffer: | PBS, pH 7.3, containing 0.05% Proclin-300, 50% glycerol. |
| Concentration: | > 0.2 mg/ml |
| Note: | THIS PRODUCT IS FOR RESEARCH USE ONLY. NOT FOR USE IN DIAGNOSTIC, THERAPEUTIC OR COSMETIC PROCEDURES. NOT FOR HUMAN OR ANIMAL CONSUMPTION. |