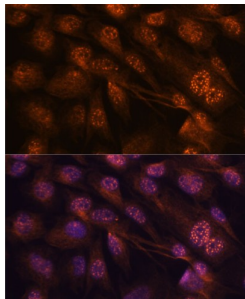
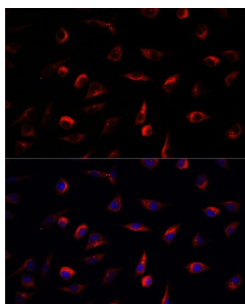


Dual Specificity Mitogen-Activated Protein Kinase Kinase 7 (MAP2K7) Antibody

Catalogue No.: abx001798



Immunofluorescence analysis of C6 cells using MAP2K7 Antibody (1/100 dilution). Blue: DAPI for nuclear staining.



Immunofluorescence analysis of L929 cells using MAP2K7 Antibody (1/100 dilution). Blue: DAPI for nuclear staining.

MAP2K7 Antibody is a Rabbit Polyclonal antibody against MAP2K7. The protein encoded by this gene is a dual specificity protein kinase that belongs to the MAP kinase kinase family. This kinase specifically activates MAPK8/JNK1 and MAPK9/JNK2, and this kinase itself is phosphorylated and activated by MAP kinase kinase kinases including MAP3K1/MEKK1, MAP3K2/MEKK2, MAP3K3/MEKK5, and MAP4K2/GCK. This kinase is involved in the signal transduction mediating the cell responses to proinflammatory cytokines, and environmental stresses. Alternative splicing results in multiple transcript variants.

Target: Dual Specificity Mitogen-Activated Protein Kinase Kinase 7 (MAP2K7)

Clonality: Polyclonal

Reactivity: Human, Mouse, Rat

Tested Applications: IF/ICC

Host: Rabbit

Recommended dilutions: IF/ICC: 1/50 - 1/200. Optimal dilutions/concentrations should be determined by the end user.

Conjugation: Unconjugated

Immunogen: Recombinant fusion protein corresponding to human MAP2K7

Isotype: IgG

Datasheet

Version: 4.0.0

Revision date: 22 Jun 2025



Form:	Liquid
Purification:	Purified by affinity chromatography.
Storage:	Aliquot and store at -20°C. Avoid repeated freeze/thaw cycles.
UniProt Primary AC:	O14733 (UniProt , ExPASy)
Gene Symbol:	MAP2K7
GeneID:	5609
NCBI Accession:	NP_660186.1
KEGG:	hsa:5609
String:	9606.ENSP00000381070
Buffer:	PBS, pH 7.3, containing 0.02% sodium azide, 50% glycerol.
Concentration:	1 mg/ml
Note:	THIS PRODUCT IS FOR RESEARCH USE ONLY. NOT FOR USE IN DIAGNOSTIC, THERAPEUTIC OR COSMETIC PROCEDURES. NOT FOR HUMAN OR ANIMAL CONSUMPTION.