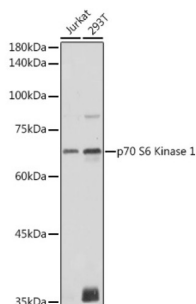
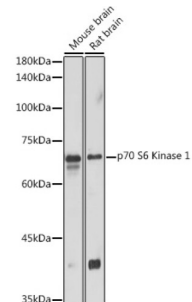


Ribosomal Protein S6 Kinase Beta 1 (RPS6KB1) Antibody

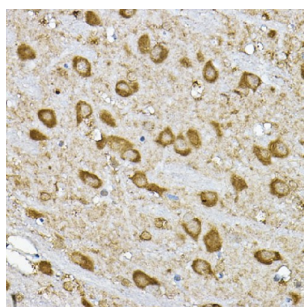
Catalogue No.: abx001802



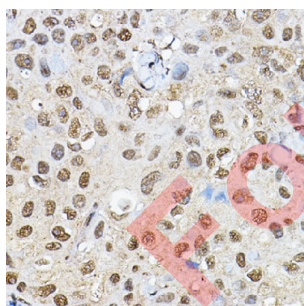
Western blot analysis of extracts of various cell lines using p70 S6 Kinase 1 1 Antibody (1/1000 dilution).



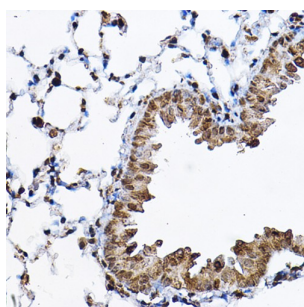
Western blot analysis of extracts of various cell lines using p70 S6 Kinase 1 1 Antibody (1/1000 dilution).



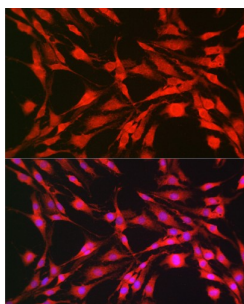
Immunohistochemistry of paraffin-embedded rat brain using p70 S6 Kinase 1 1 Antibody (1/100 dilution, 40x lens). High pressure antigen retrieval was performed in 10 mM citrate buffer pH 6.0 before commencing with IHC staining protocol.



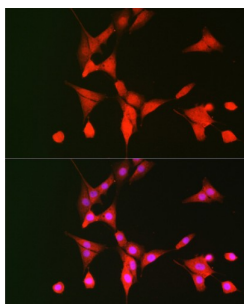
Immunohistochemistry of paraffin-embedded human breast cancer using p70 S6 Kinase 1 1 Antibody (1/100 dilution, 40x lens). High pressure antigen retrieval was performed in 10 mM citrate buffer pH 6.0 before commencing with IHC staining protocol



Immunohistochemistry of paraffin-embedded mouse lung using p70 S6 Kinase 1 1 Antibody (1/100 dilution, 40x lens). High pressure antigen retrieval was performed in 10 mM citrate buffer pH 6.0 before commencing with IHC staining protocol.



Immunofluorescence analysis of C6 cells using p70 S6 Kinase 1 Antibody (1/100 dilution, 40x lens). Blue: DAPI for nuclear staining.



Immunofluorescence analysis of NIH/3T3 cells using p70 S6 Kinase 1 Antibody (1/100 dilution, 40x lens). Blue: DAPI for nuclear staining.

RPS6KB1 Antibody is a Rabbit Polyclonal antibody against RPS6KB1. This gene encodes a member of the ribosomal S6 kinase family of serine/threonine kinases. The encoded protein responds to mTOR (mammalian target of rapamycin) signaling to promote protein synthesis, cell growth, and cell proliferation. Activity of this gene has been associated with human cancer. Alternatively spliced transcript variants have been observed. The use of alternative translation start sites results in isoforms with longer or shorter N-termini which may differ in their subcellular localizations. There are two pseudogenes for this gene on chromosome 17.

Target: Ribosomal Protein S6 Kinase Beta 1 (RPS6KB1)

Clonality: Polyclonal

Reactivity: Human, Mouse, Rat

Tested Applications: WB, IHC, IF/ICC

Host: Rabbit

Recommended dilutions: WB: 1/500 - 1/2000, IHC-P: 1/50 - 1/200, IF/ICC: 1/50 - 1/200. Not tested in IHC-F. Optimal dilutions/concentrations should be determined by the end user.

Conjugation: Unconjugated

Immunogen: A synthetic peptide corresponding to human P70 S6K

Isotype: IgG

Form: Liquid

Datasheet

Version: 4.0.0
Revision date: 06 Mar 2025



Purification:	Purified by affinity chromatography.
Storage:	Aliquot and store at -20°C. Avoid repeated freeze/thaw cycles.
UniProt Primary AC:	P23443 (UniProt , ExPASy)
Gene Symbol:	RPS6KB1
GeneID:	6198
NCBI Accession:	NP_003152.1
KEGG:	hsa:6198
String:	9606.ENSP00000225577
Molecular Weight:	Calculated MW: 51 kDa/52 kDa/56 kDa/59 kDa Observed MW: 70 kDa
Buffer:	PBS, pH 7.3, containing 0.01% thiomersal, 50% glycerol.
Concentration:	1 mg/ml
Note:	THIS PRODUCT IS FOR RESEARCH USE ONLY. NOT FOR USE IN DIAGNOSTIC, THERAPEUTIC OR COSMETIC PROCEDURES. NOT FOR HUMAN OR ANIMAL CONSUMPTION.