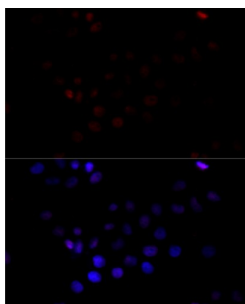
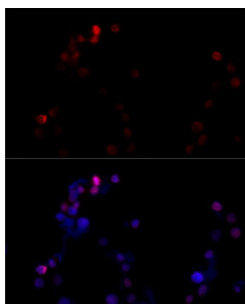


## TATA Box Binding Protein (TBP) Antibody

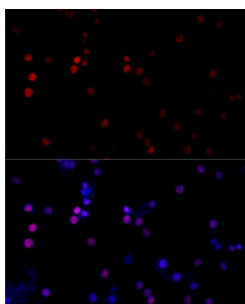
Catalogue No.: abx001804



Immunofluorescence analysis of HeLa cells using TBP Antibody (1/100 dilution, 40x lens).  
Blue: DAPI for nuclear staining.



Immunofluorescence analysis of NIH/3T3 cells using TBP Antibody (1/100 dilution, 40x lens).  
Blue: DAPI for nuclear staining.



Immunofluorescence analysis of PC-12 cells using TBP Antibody (1/100 dilution, 40x lens).  
Blue: DAPI for nuclear staining.

TBP Antibody is a Rabbit Polyclonal antibody against TBP. The TATA binding protein (TBP) is a transcription factor that binds specifically to a DNA sequence TATA box. This DNA sequence is found about 25-30 base pairs upstream of the transcription start site in some eukaryotic gene promoters. TBP, along with a variety of TBP-associated factors, make up the TFIID, a general transcription factor that in turn makes up part of the RNA polymerase II preinitiation complex. As one of the few proteins in the preinitiation complex that binds DNA in a sequence-specific manner, it helps position RNA polymerase II over the transcription start site of the gene. However, it is estimated that only 10-20% of human promoters have TATA boxes. Therefore, TBP is probably not the only protein involved in positioning RNA polymerase II. This protein is not suitable for samples where the nuclear envelope has been removed.

**Target:** TATA Box Binding Protein (TBP)

**Clonality:** Polyclonal

**Reactivity:** Human, Mouse, Rat

**Tested Applications:** IF/ICC

# Datasheet

Version: 4.0.0  
Revision date: 06 Mar 2025



**Host:** Rabbit

**Recommended dilutions:** IF/ICC: 1/50 - 1/200. Optimal dilutions/concentrations should be determined by the end user.

**Conjugation:** Unconjugated

**Immunogen:** Recombinant fusion protein corresponding to human TBP

**Isotype:** IgG

**Form:** Liquid

**Purification:** Purified by affinity chromatography.

**Storage:** Aliquot and store at -20°C. Avoid repeated freeze/thaw cycles.

**UniProt Primary AC:** P20226 ([UniProt](#), [ExPASy](#))

**Gene Symbol:** TBP

**GeneID:** [6908](#)

**NCBI Accession:** NP\_001165556.1

**KEGG:** hsa:6908

**String:** [9606.ENSP00000375942](#)

**Buffer:** PBS, pH 7.3, containing 0.02% sodium azide, 50% glycerol.

**Concentration:** 1 mg/ml

**Note:** THIS PRODUCT IS FOR RESEARCH USE ONLY. NOT FOR USE IN DIAGNOSTIC, THERAPEUTIC OR COSMETIC PROCEDURES. NOT FOR HUMAN OR ANIMAL CONSUMPTION.