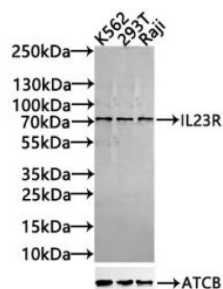
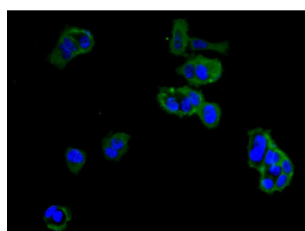


Interleukin 23 Receptor (IL23R) Antibody

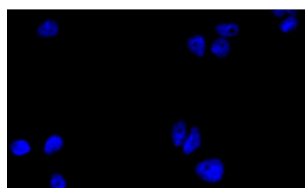
Catalogue No.: abx318211



WB analysis of K562, 293T and Raji whole cell lysates (30 µg per lane), using IL23R antibody (1/1000 dilution), with a secondary Goat anti-Rabbit IgG antibody (1/40000 dilution). Calculated MW: 20 kDa, 30 kDa, 41 kDa, 43 kDa, 72 kDa. Observed MW: 72 kDa.



IF analysis of MCF-7 cells, using IL23R antibody (1/30 dilution) and a Goat anti-Rabbit IgG H+L antibody conjugated to AF488. The cells were fixed in 4% formaldehyde and blocked with 10% Goat serum. DAPI was used as a nuclear stain.



IF analysis of MCF-7 cells with 5% Goat serum, using IL23R antibody and a Goat anti-Rabbit IgG H+L antibody conjugated to AF488. The cells were fixed in 4% formaldehyde and blocked with 10% Goat serum. DAPI was used as a nuclear stain.

IL23R Antibody is a Rabbit Polyclonal against IL23R.

Target: Interleukin 23 Receptor (IL23R)

Research Area: Immunology

Clonality: Polyclonal

Reactivity: Human

Tested Applications: ELISA, WB, IF/ICC

Host: Rabbit

Recommended dilutions: WB: 1/500 - 1/2000, IF/ICC: 1/20 - 1/100. Optimal dilutions/concentrations should be determined by the end user.

Datasheet

Version: 5.0.0
Revision date: 09 May 2025



Conjugation:	Unconjugated
Immunogen:	Recombinant Human Interleukin-23 receptor protein (15-125 AA).
Isotype:	IgG
Form:	Liquid
Purification:	Antigen Affinity Chromatography.
Storage:	Aliquot and store at -20°C. Avoid repeated freeze/thaw cycles.
UniProt Primary AC:	Q5VWK5 (UniProt , ExPASy)
Gene Symbol:	IL23R
GeneID:	149233
OMIM:	607562
NCBI Accession:	NP_653302.2, NM_144701.2
KEGG:	hsa:149233
String:	9606.ENSP00000321345
Buffer:	0.01 M PBS, pH 7.4, 0.03% Proclin-300 and 50% Glycerol.
Concentration:	1 mg/ml
Note:	THIS PRODUCT IS FOR RESEARCH USE ONLY. NOT FOR USE IN DIAGNOSTIC, THERAPEUTIC OR COSMETIC PROCEDURES. NOT FOR HUMAN OR ANIMAL CONSUMPTION.