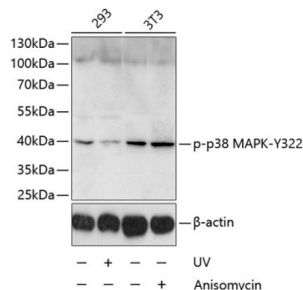


Mitogen-Activated Protein Kinase 14 Phospho-Tyr322 (MAPK14 pY322) Antibody

Catalogue No.: abx000137



Western blot analysis of lysates from 293 and NIH/3T3 cells, using Phospho-p38 MAPK-Y322 Antibody at 1/1000 dilution. 293 cells were treated by UV for 15-30 minutes. NIH/3T3 cells were treated by Anisomycin (25 µg/ml) for 30 minutes. Secondary antibody: HRP-conjugated Goat anti-Rabbit IgG (H+L) at 1/10000 dilution. Lysates/proteins: 25 µg per lane. Blocking buffer: 3% BSA. Exposure time: 15s.

MAPK14 (pY322) Antibody is a Rabbit Polyclonal antibody against MAPK14 (pY322). The protein encoded by this gene is a member of the MAP kinase family. MAP kinases act as an integration point for multiple biochemical signals, and are involved in a wide variety of cellular processes such as proliferation, differentiation, transcription regulation and development. This kinase is activated by various environmental stresses and proinflammatory cytokines. The activation requires its phosphorylation by MAP kinase kinases (MKKs), or its autophosphorylation triggered by the interaction of MAP3K7IP1/TAB1 protein with this kinase. The substrates of this kinase include transcription regulator ATF2, MEF2C, and MAX, cell cycle regulator CDC25B, and tumor suppressor p53, which suggest the roles of this kinase in stress related transcription and cell cycle regulation, as well as in genotoxic stress response. Four alternatively spliced transcript variants of this gene encoding distinct isoforms have been reported.

Target:	Mitogen-Activated Protein Kinase 14 Phospho-Tyr322 (MAPK14 pY322)
Clonality:	Polyclonal
Reactivity:	Human, Mouse
Tested Applications:	ELISA, WB
Host:	Rabbit
Recommended dilutions:	ELISA: 1 µg/ml, WB: 1/500 - 1/2000. Optimal dilutions/concentrations should be determined by the end user.
Conjugation:	Unconjugated
Immunogen:	A synthetic phosphorylated peptide around Y322 of human p38 MAPK.
Isotype:	IgG
Form:	Liquid
Purification:	Purified by affinity chromatography.

Datasheet

Version: 4.0.0
Revision date: 14 Oct 2025



Storage: Aliquot and store at -20°C. Avoid repeated freeze/thaw cycles.

UniProt Primary AC: Q16539 ([UniProt](#), [ExPASy](#))

Gene Symbol: MAPK14

GeneID: [1432](#)

NCBI Accession: NP_620581.1

KEGG: hsa:1432

String: [9606.ENSP00000229795](#)

Molecular Weight: Calculated MW: 41 kDa
Observed MW: 41 kDa

Buffer: PBS, pH 7.3, containing 0.02% sodium azide, 50% glycerol.

Concentration: > 0.2 mg/ml

Note: THIS PRODUCT IS FOR RESEARCH USE ONLY. NOT FOR USE IN DIAGNOSTIC, THERAPEUTIC OR COSMETIC PROCEDURES. NOT FOR HUMAN OR ANIMAL CONSUMPTION.

For Reference Only