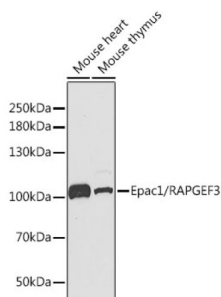


## Rap Guanine Nucleotide Exchange Factor 3 (RAPGEF3) Antibody

Catalogue No.: abx001811



Western blot analysis of various lysates using Epac1/RAPGEF3 Antibody at 1/1000 dilution.  
Secondary antibody: HRP-conjugated Goat anti-Rabbit IgG (H+L) at 1/10000 dilution.  
Lysates/proteins: 25 µg per lane. Blocking buffer: 3% nonfat dry milk in TBST.

RAPGEF3 Antibody is a Rabbit Polyclonal antibody against RAPGEF3. EPAC1 and EPAC2 (exchange proteins activated by cyclic AMP) are guanine nucleotide exchange factors (GEFs) that catalyze the exchange of GDP for GTP, activating Rap1 and Rap2 small GTPases. Rap activation by EPAC is cAMP-dependent and mediates cAMP signaling in part through protein kinase A (PKA) (reviewed in 1). EPAC signaling plays a significant role in a number of cellular processes including migration and focal adhesion formation (2), exocytosis (3), insulin signaling (4), axon growth and guidance (5) and neurotransmitter release (6).

<b>Target:</b>	Rap Guanine Nucleotide Exchange Factor 3 (RAPGEF3)
<b>Clonality:</b>	Polyclonal
<b>Reactivity:</b>	Human, Mouse
<b>Tested Applications:</b>	ELISA, WB
<b>Host:</b>	Rabbit
<b>Recommended dilutions:</b>	ELISA: 1 µg/ml, WB: 1/500 - 1/2000. Optimal dilutions/concentrations should be determined by the end user.
<b>Conjugation:</b>	Unconjugated
<b>Immunogen:</b>	Recombinant protein corresponding to RAPGEF3. The exact sequence is proprietary.
<b>Isotype:</b>	IgG
<b>Form:</b>	Liquid
<b>Purification:</b>	Purified by affinity chromatography.
<b>Storage:</b>	Aliquot and store at -20°C. Avoid repeated freeze/thaw cycles.
<b>UniProt Primary AC:</b>	O95398 ( <a href="#">UniProt</a> , <a href="#">ExPASy</a> )

# Datasheet

Version: 9.0.0  
Revision date: 21 Aug 2025



**Gene Symbol:** RAPGEF3

**GeneID:** [10411](#)

**OMIM:** [606057](#)

**NCBI Accession:** NP\_001092002.1

**HGNC:** 16629

**KEGG:** hsa:10411

**Ensembl:** ENSG00000079337

**String:** [9606.ENSP00000395708](#)

**Molecular Weight:** Calculated MW: 104 kDa  
Observed MW: 104 kDa

**Buffer:** PBS, pH 7.3, containing 0.02% sodium azide, 50% glycerol.

**Concentration:** 0.35 mg/ml

**Note:** THIS PRODUCT IS FOR RESEARCH USE ONLY. NOT FOR USE IN DIAGNOSTIC, THERAPEUTIC OR COSMETIC PROCEDURES. NOT FOR HUMAN OR ANIMAL CONSUMPTION.