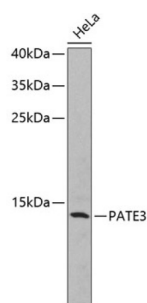


Prostate And Testis Expressed Protein 3 (PATE3) Antibody

Catalogue No.: abx001816



Western blot analysis of lysates from HeLa cells, using PATE3 Antibody. Secondary antibody: HRP-conjugated Goat anti-Rabbit IgG (H+L) at 1/10000 dilution. Lysates/proteins: 25 µg per lane. Blocking buffer: 3% nonfat dry milk in TBST.

PATE3 Antibody is a Rabbit Polyclonal antibody against PATE3. PATE3 (prostate and testis expressed protein 3), also known as PATE-DJ or HEL-127, is a 98 amino acid protein that contains one UPAR/Ly6 domain and belongs to the PATE family. PATE3 is a secreted protein that is expressed in prostate and testis. The gene that encodes PATE3 consists of around 3,490 bases and maps to human chromosome 11p15.5. Chromosome 11, which comprises approximately 4% of the human genome, is considered a gene and disease association-dense chromosome. The chromosome 11 encoded Atm gene is important for regulation of cell cycle arrest and apoptosis following double strand DNA breaks. Atm mutation leads to the disorder known as ataxia-telangiectasia. The blood disorders Sickle cell anemia and thalassemia are caused by HBB gene mutations, while Wilms' tumors, WAGR syndrome and Denys-Drash syndrome are associated with mutations of the WT1 gene. Jervell and Lange-Nielsen syndrome, Jacobsen syndrome, Niemann-Pick disease, hereditary angioedema and Smith-Lemli-Opitz syndrome are also associated with defects in chromosome 11-encoded genes.

Target:	Prostate And Testis Expressed Protein 3 (PATE3)
Clonality:	Polyclonal
Reactivity:	Human
Tested Applications:	ELISA, WB
Host:	Rabbit
Recommended dilutions:	ELISA: 1 µg/ml, WB: 1/500 - 1/2000. Optimal dilutions/concentrations should be determined by the end user.
Conjugation:	Unconjugated
Immunogen:	Recombinant fusion protein containing a sequence corresponding to amino acids 1-98 of human PATE3.
Isotype:	IgG
Form:	Liquid
Purification:	Purified by affinity chromatography.

Datasheet

Version: 5.0.0
Revision date: 08 Sep 2025



Storage: Aliquot and store at -20°C. Avoid repeated freeze/thaw cycles.

UniProt Primary AC: B3GLJ2 ([UniProt](#), [ExPASy](#))

Gene Symbol: PATE3

GeneID: [100169851](#)

NCBI Accession: NP_001123355.3

KEGG: hsa:100169851

String: [9606.ENSP00000395505](#)

Molecular Weight: Calculated MW: 12 kDa
Observed MW: 12 kDa

Buffer: PBS, pH 7.3, containing 0.02% sodium azide, 50% glycerol.

Concentration: > 0.2 mg/ml

Note: THIS PRODUCT IS FOR RESEARCH USE ONLY. NOT FOR USE IN DIAGNOSTIC, THERAPEUTIC OR COSMETIC PROCEDURES. NOT FOR HUMAN OR ANIMAL CONSUMPTION.

For Reference Only