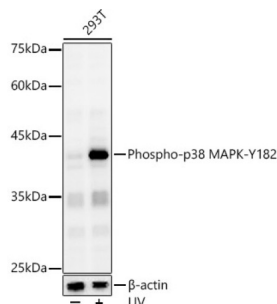
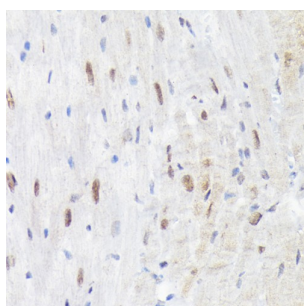


Mitogen-Activated Protein Kinase 14 Phospho-Tyr182 (MAPK14 pY182) Antibody

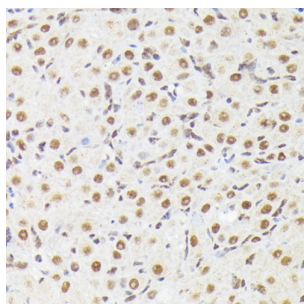
Catalogue No.: abx000139



Western blot analysis of lysates from 293T cells, using Phospho-p38 MAPK-Y182 Antibody at 1/1000 dilution. Secondary antibody: HRP-conjugated Goat anti-Rabbit IgG (H+L) at 1/10000 dilution. Lysates/proteins: 25 µg per lane. Blocking buffer: 3% nonfat dry milk in TBST. Exposure time: 30s.



Immunohistochemistry analysis of paraffin-embedded Human colon carcinoma tissue using Phospho-p38 MAPK-Y182 Antibody at a dilution of 1/100 (40x lens). High pressure antigen retrieval was performed in 0.01 M citrate buffer (pH 6.0) prior to IHC staining.



Immunohistochemistry analysis of paraffin-embedded Rat lung tissue using Phospho-p38 MAPK-Y182 Antibody at a dilution of 1/100 (40x lens). High pressure antigen retrieval was performed in 0.01 M citrate buffer (pH 6.0) prior to IHC staining.

MAPK14 (pY182) Antibody is a Rabbit Polyclonal antibody against MAPK14 (pY182). The protein encoded by this gene is a member of the MAP kinase family. MAP kinases act as an integration point for multiple biochemical signals, and are involved in a wide variety of cellular processes such as proliferation, differentiation, transcription regulation and development. This kinase is activated by various environmental stresses and proinflammatory cytokines. The activation requires its phosphorylation by MAP kinase kinases (MKKs), or its autophosphorylation triggered by the interaction of MAP3K7IP1/TAB1 protein with this kinase. The substrates of this kinase include transcription regulator ATF2, MEF2C, and MAX, cell cycle regulator CDC25B, and tumor suppressor p53, which suggest the roles of this kinase in stress related transcription and cell cycle regulation, as well as in genotoxic stress response. Four alternatively spliced transcript variants of this gene encoding distinct isoforms have been reported.

Target: Mitogen-Activated Protein Kinase 14 Phospho-Tyr182 (MAPK14 pY182)

Clonality: Polyclonal

Reactivity: Human, Mouse, Rat

Datasheet

Version: 5.0.0
Revision date: 04 Oct 2025



Tested Applications:	ELISA, WB, IHC
Host:	Rabbit
Recommended dilutions:	ELISA: 1 µg/ml, WB: 1/500 - 1/1000, IHC-P: 1/50 - 1/200. Not tested in IHC-F. Optimal dilutions/concentrations should be determined by the end user.
Conjugation:	Unconjugated
Immunogen:	Synthetic peptide corresponding to MAPK14 pY182. The exact sequence is proprietary.
Isotype:	IgG
Form:	Liquid
Purification:	Purified by affinity chromatography.
Storage:	Aliquot and store at -20°C. Avoid repeated freeze/thaw cycles.
UniProt Primary AC:	Q16539 (UniProt , ExPASy)
Gene Symbol:	MAPK14
GeneID:	1432
NCBI Accession:	NP_620581.1
KEGG:	hsa:1432
String:	9606.ENSP00000229795
Molecular Weight:	Calculated MW: 41 kDa Observed MW: 42 kDa
Buffer:	PBS, pH 7.3, containing 0.05% Proclin-300, 50% glycerol.
Concentration:	> 0.2 mg/ml
Note:	THIS PRODUCT IS FOR RESEARCH USE ONLY. NOT FOR USE IN DIAGNOSTIC, THERAPEUTIC OR COSMETIC PROCEDURES. NOT FOR HUMAN OR ANIMAL CONSUMPTION.