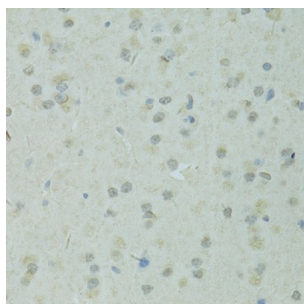
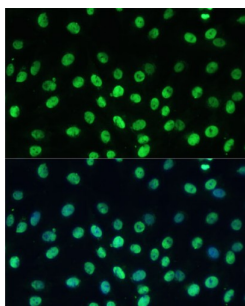


## Tripartite Motif-Containing Protein 28 (TRIM28) Antibody

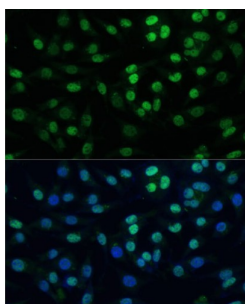
Catalogue No.: abx001832



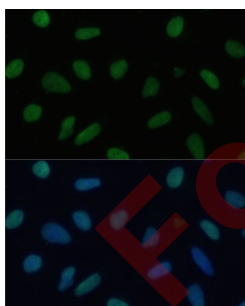
Immunohistochemistry of paraffin-embedded Rat brain using TRIM28 Antibody (1/100 dilution, 40x lens).



Immunofluorescence analysis of C6 cells using TRIM28 Antibody (1/100 dilution, 40x lens). Blue: DAPI for nuclear staining.



Immunofluorescence analysis of L929 cells using TRIM28 Antibody (1/100 dilution, 40x lens). Blue: DAPI for nuclear staining.



Immunofluorescence analysis of U-2 OS cells using TRIM28 Antibody (1/100 dilution, 40x lens). Blue: DAPI for nuclear staining.

TRIM28 Antibody is a Rabbit Polyclonal antibody against TRIM28. The protein encoded by this gene mediates transcriptional control by interaction with the Kruppel-associated box repression domain found in many transcription factors. The protein localizes to the nucleus and is thought to associate with specific chromatin regions. The protein is a member of the tripartite motif family. This tripartite motif includes three zinc-binding domains, a RING, a B-box type 1 and a B-box type 2, and a coiled-coil region.

**Target:** Tripartite Motif-Containing Protein 28 (TRIM28)

# Datasheet

Version: 4.0.0  
Revision date: 08 Sep 2025



Clonality:	Polyclonal
Reactivity:	Human, Mouse, Rat
Tested Applications:	IHC, IF/ICC
Host:	Rabbit
Recommended dilutions:	IHC-P: 1/100 - 1/200, IF/ICC: 1/50 - 1/200. Not tested in IHC-F. Optimal dilutions/concentrations should be determined by the end user.
Conjugation:	Unconjugated
Immunogen:	Recombinant fusion protein corresponding to human TRIM28
Isotype:	IgG
Form:	Liquid
Purification:	Purified by affinity chromatography.
Storage:	Aliquot and store at -20°C. Avoid repeated freeze/thaw cycles.
UniProt Primary AC:	Q13263 ( <a href="#">UniProt</a> , <a href="#">ExPASy</a> )
Gene Symbol:	TRIM28
GeneID:	<a href="#">10155</a>
NCBI Accession:	NP_005753.1
KEGG:	hsa:10155
String:	<a href="#">9606.ENSP00000253024</a>
Buffer:	PBS, pH 7.3, containing 0.02% sodium azide, 50% glycerol.
Concentration:	1 mg/ml
Note:	THIS PRODUCT IS FOR RESEARCH USE ONLY. NOT FOR USE IN DIAGNOSTIC, THERAPEUTIC OR COSMETIC PROCEDURES. NOT FOR HUMAN OR ANIMAL CONSUMPTION.