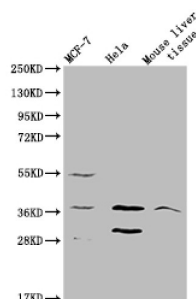
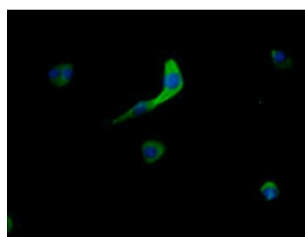


Mas-Related G-Protein Coupled Receptor Member X2 (MRGPRX2) Antibody

Catalogue No.: abx318635



Western blot analysis of MCF-7 (Lane 1), HeLa (Lane 2) cells and Mouse liver tissue (Lane 3) using Mas-Related G-Protein Coupled Receptor Member X2 Antibody (1/2000 dilution) followed by Goat Anti-Rabbit IgG (1/50000 dilution).
Calculated MW: 38 kDa
Observed MW: 38 kDa



Immunofluorescence analysis of MCF-7 cells using Mas-Related G-Protein Coupled Receptor Member X2 Antibody (1/200 dilution) and AF-488 conjugated Goat Anti-Rabbit IgG, H+L.

MRGPRX2 Antibody is a Rabbit Polyclonal against MRGPRX2.

Target: Mas-Related G-Protein Coupled Receptor Member X2 (MRGPRX2)

Clonality: Polyclonal

Reactivity: Human, Mouse

Tested Applications: ELISA, WB, IF/ICC

Host: Rabbit

Recommended dilutions: WB: 1/1000 - 1/5000, IF/ICC: 1/50 - 1/200. Optimal dilutions/concentrations should be determined by the end user.

Conjugation: Unconjugated

Immunogen: Recombinant Human Mas-related G-protein coupled receptor member X2 protein (286-330AA).

Isotype: IgG

Form: Liquid

Datasheet

Version: 3.0.0

Revision date: 06 Oct 2025



Purity:	> 95%
Purification:	Purified by Protein G.
Storage:	Aliquot and store at -20°C. Avoid repeated freeze/thaw cycles.
UniProt Primary AC:	Q96LB1 (UniProt , ExPASy)
Gene Symbol:	MRGPRX2
GeneID:	117194
OMIM:	607228
KEGG:	hsa:117194
String:	9606.ENSP00000333800
Buffer:	0.01 M PBS, pH 7.4, 0.03% Proclin-300 and 50% Glycerol.
Concentration:	1 mg/ml
Note:	THIS PRODUCT IS FOR RESEARCH USE ONLY. NOT FOR USE IN DIAGNOSTIC, THERAPEUTIC OR COSMETIC PROCEDURES. NOT FOR HUMAN OR ANIMAL CONSUMPTION.