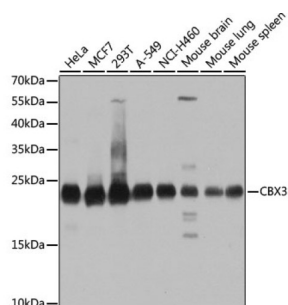
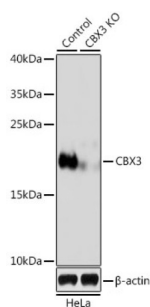


Chromobox Protein Homolog 3 (CBX3) Antibody

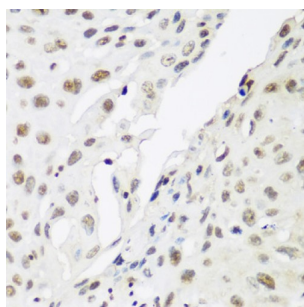
Catalogue No.: abx001835



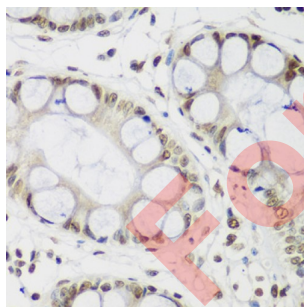
Western blot analysis of extracts of various cell lines using CBX3 Antibody (1/1000 dilution).



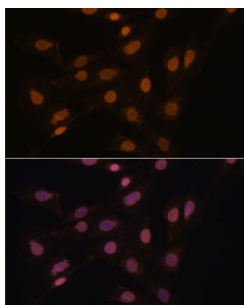
Western blot analysis of extracts from normal (control) and CBX3 knockout (KO) HeLa cells using CBX3 Antibody (1/50 dilution).



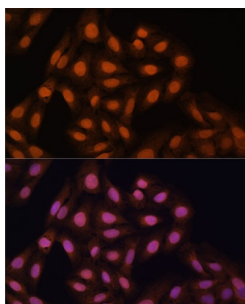
Immunohistochemistry of paraffin-embedded Human lung cancer using CBX3 Antibody (1/200 dilution, 40x lens).



Immunohistochemistry of paraffin-embedded Human gastric using CBX3 Antibody (1/200 dilution, 40x lens).



Immunofluorescence analysis of C6 cells using CBX3 Antibody (1/100 dilution). Blue: DAPI for nuclear staining.



Immunofluorescence analysis of U-2 OS cells using CBX3 Antibody (1/100 dilution). Blue: DAPI for nuclear staining.

CBX3 Antibody is a Rabbit Polyclonal antibody against CBX3. At the nuclear envelope, the nuclear lamina and heterochromatin are adjacent to the inner nuclear membrane. The protein encoded by this gene binds DNA and is a component of heterochromatin. This protein also can bind lamin B receptor, an integral membrane protein found in the inner nuclear membrane. The dual binding functions of the encoded protein may explain the association of heterochromatin with the inner nuclear membrane. This protein binds histone H3 tails methylated at Lys-9 sites. This protein is also recruited to sites of ultraviolet-induced DNA damage and double-strand breaks. Two transcript variants encoding the same protein but differing in the 5' UTR, have been found for this gene.

Target:	Chromobox Protein Homolog 3 (CBX3)
Clonality:	Polyclonal
Reactivity:	Human, Mouse, Rat
Tested Applications:	WB, IHC, IF/ICC
Host:	Rabbit
Recommended dilutions:	WB: 1/500 - 1/2000, IHC-P: 1/50 - 1/200, IF/ICC: 1/50 - 1/200. Not tested in IHC-F. Optimal dilutions/concentrations should be determined by the end user.
Conjugation:	Unconjugated
Immunogen:	Recombinant fusion protein corresponding to human CBX3
Isotype:	IgG
Form:	Liquid
Purification:	Purified by affinity chromatography.
Storage:	Aliquot and store at -20°C. Avoid repeated freeze/thaw cycles.
UniProt Primary AC:	Q13185 (UniProt , ExPASy)
Gene Symbol:	CBX3

Datasheet

Version: 3.0.0

Revision date: 09 Oct 2025



GeneID: [11335](#)

NCBI Accession: NP_009207.2

KEGG: hsa:11335

String: [9606.ENSP00000336687](#)

Molecular Weight: Calculated MW: 20 kDa
Observed MW: 23 kDa

Buffer: PBS, pH 7.3, containing 0.02% sodium azide, 50% glycerol.

Concentration: 1 mg/ml

Note: THIS PRODUCT IS FOR RESEARCH USE ONLY. NOT FOR USE IN DIAGNOSTIC, THERAPEUTIC OR COSMETIC PROCEDURES. NOT FOR HUMAN OR ANIMAL CONSUMPTION.

For Reference Only