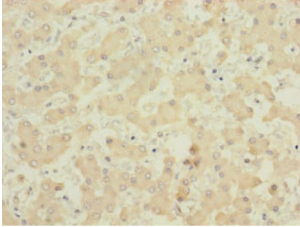
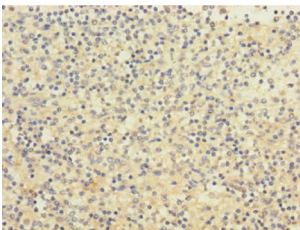


Phosphatidylinositol Glycan L (PIGL) Antibody

Catalogue No.: abx301765



IHC-P analysis of paraffin-embedded human liver tissue using PIGL antibody (1/100 dilution).



IHC-P analysis of paraffin-embedded human spleen tissue using PIGL antibody (1/100 dilution).

PIGL Antibody is a Rabbit Polyclonal against PIGL.

Target: Phosphatidylinositol Glycan L (PIGL)

Clonality: Polyclonal

Reactivity: Human

Tested Applications: ELISA, IHC

Host: Rabbit

Recommended dilutions: IHC: 1/20 - 1/200. Optimal dilutions/concentrations should be determined by the end user.

Conjugation: Unconjugated

Immunogen: Recombinant human N-acetylglucosaminyl-phosphatidylinositol de-N-acetylase protein (23-252AA).

Isotype: IgG

Form: Liquid

Purity: > 95%

Datasheet

Version: 3.0.0
Revision date: 21 Mar 2025



Purification:	Purified by Protein G.
Storage:	Aliquot and store at -20°C. Avoid repeated freeze/thaw cycles.
UniProt Primary AC:	Q9Y2B2 (UniProt , ExPASy)
Gene Symbol:	PIGL
GeneID:	9487
OMIM:	280000
NCBI Accession:	NP_004269.1, NM_004278.3
String:	9606.ENSP00000225609
Buffer:	0.01 M PBS, pH 7.4, 0.03% Proclin-300 and 50% Glycerol.
Concentration:	1 mg/ml
Note:	THIS PRODUCT IS FOR RESEARCH USE ONLY. NOT FOR USE IN DIAGNOSTIC, THERAPEUTIC OR COSMETIC PROCEDURES. NOT FOR HUMAN OR ANIMAL CONSUMPTION.

For Reference Only