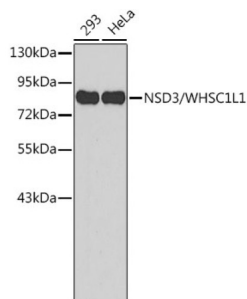


Wolf-Hirschhorn Syndrome Candidate 1-Like Protein (WHSC1L1) Antibody

Catalogue No.: abx001880



Western blot analysis of various lysates using NSD3/WHSC1L1 Antibody. Secondary antibody: HRP-conjugated Goat anti-Rabbit IgG (H+L) at 1/10000 dilution. Lysates/proteins: 25 µg per lane. Blocking buffer: 3% nonfat dry milk in TBST.

WHSC1L1 Antibody is a Rabbit Polyclonal antibody against WHSC1L1. This gene is related to the Wolf-Hirschhorn syndrome candidate-1 gene and encodes a protein with PWWP (proline-tryptophan-tryptophan-proline) domains. The function of the protein has not been determined. Two alternatively spliced variants have been described.

| | |
|-------------------------------|--|
| Target: | Wolf-Hirschhorn Syndrome Candidate 1-Like Protein (WHSC1L1) |
| Clonality: | Polyclonal |
| Reactivity: | Human, Mouse |
| Tested Applications: | ELISA, WB |
| Host: | Rabbit |
| Recommended dilutions: | ELISA: 1 µg/ml, WB: 1/200 - 1/2000. Optimal dilutions/concentrations should be determined by the end user. |
| Conjugation: | Unconjugated |
| Immunogen: | Recombinant fusion protein containing a sequence corresponding to amino acids 430-590 of human NSD3/WHSC1L1. |
| Isotype: | IgG |
| Form: | Liquid |
| Purification: | Purified by affinity chromatography. |
| Storage: | Aliquot and store at -20°C. Avoid repeated freeze/thaw cycles. |
| UniProt Primary AC: | Q9BZ95 (UniProt , ExPASy) |

Datasheet

Version: 5.0.0

Revision date: 22 Dec 2025



Gene Symbol: NSD3

GeneID: [54904](#)

NCBI Accession: NP_075447.1

String: [9606.ENSP00000313983](#)

Molecular Weight: Calculated MW: 162 kDa
Observed MW: 85 kDa

Buffer: PBS, pH 7.3, containing 0.01% thimerosal, 50% glycerol.

Concentration: > 0.2 mg/ml

Note: THIS PRODUCT IS FOR RESEARCH USE ONLY. NOT FOR USE IN DIAGNOSTIC, THERAPEUTIC OR COSMETIC PROCEDURES. NOT FOR HUMAN OR ANIMAL CONSUMPTION.

For Reference Only