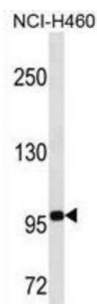


Transducin Like Enhancer Of Split 4 (TLE4) Antibody

Catalogue No.: abx025001



Transcriptional corepressor that binds to a number of transcription factors. Inhibits the transcriptional activation mediated by PAX5, and by CTNNB1 and TCF family members in Wnt signaling. The effects of full-length TLE family members may be modulated by association with dominant-negative AES (By similarity). This antibody is supplied as crude ascites.

Target:	Transducin Like Enhancer Of Split 4 (TLE4)
Clonality:	Monoclonal
Reactivity:	Human
Tested Applications:	ELISA, WB
Host:	Mouse
Recommended dilutions:	WB: 1/100 - 1/3200. Optimal dilutions/concentrations should be determined by the end user.
Conjugation:	Unconjugated
Immunogen:	KLH-conjugated synthetic peptide between 262-290 amino acids from the Central region of human TLE4.
Isotype:	IgM
Form:	Liquid
Purification:	Unpurified crude ascites.
Storage:	Aliquot and store at -20°C. Avoid repeated freeze/thaw cycles.
UniProt Primary AC:	Q04727 (UniProt , ExPASy)
KEGG:	hsa:7091

Datasheet

Version: 3.0.0

Revision date: 16 Sep 2025



String: [9606.ENSPO0000365720](#)

Molecular Weight: Calculated MW: 83.8 kDa

Buffer: Ascites containing 0.09% sodium azide.

Specificity: Predicted to react with Mouse and Rat TLE4.

Note: THIS PRODUCT IS FOR RESEARCH USE ONLY. NOT FOR USE IN DIAGNOSTIC, THERAPEUTIC OR COSMETIC PROCEDURES. NOT FOR HUMAN OR ANIMAL CONSUMPTION.

For Reference Only