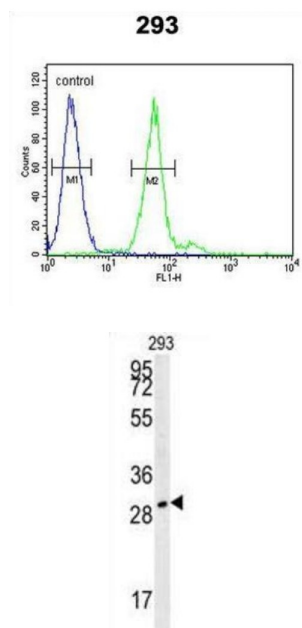


Tryptase Alpha/Beta-1 (TPSAB1) Antibody

Catalogue No.: abx025064



Tryptase Alpha/Beta-1s comprise a family of trypsin-like serine proteases, the peptidase family S1. Tryptase Alpha/Beta-1s are enzymatically active only as heparin-stabilized tetramers, and they are resistant to all known endogenous proteinase inhibitors. Several Tryptase Alpha/Beta-1 genes are clustered on chromosome 16p13.3. These genes are characterized by several distinct features. They have a highly conserved 3' UTR and contain tandem repeat sequences at the 5' flank and 3' UTR which are thought to play a role in regulation of the mRNA stability. These genes have an intron immediately upstream of the initiator Met codon, which separates the site of transcription initiation from protein coding sequence. This feature is characteristic of Tryptase Alpha/Beta-1s but is unusual in other genes. The alleles of this gene exhibit an unusual amount of sequence variation, such that the alleles were once thought to represent two separate genes, alpha and beta 1. Beta Tryptase Alpha/Beta-1s appear to be the main isoenzymes expressed in mast cells; whereas in basophils, alpha Tryptase Alpha/Beta-1s predominate. Tryptase Alpha/Beta-1s have been implicated as mediators in the pathogenesis of asthma and other allergic and inflammatory disorders.

Target: Tryptase Alpha/Beta-1 (TPSAB1)

Clonality: Polyclonal

Reactivity: Human

Tested Applications: ELISA, WB, FCM

Host: Rabbit

Recommended dilutions: WB: 1/1000, FCM: 1/10 - 1/50. Optimal dilutions/concentrations should be determined by the end user.

Conjugation: Unconjugated

Datasheet

Version: 3.0.0
Revision date: 15 Sep 2025



Immunogen:	KLH-conjugated synthetic peptide between 61-87 amino acids from the Central region of human TPSAB1.
Isotype:	IgG
Form:	Liquid
Purification:	Purified through a protein A column, followed by peptide affinity purification.
Storage:	Aliquot and store at -20°C. Avoid repeated freeze/thaw cycles.
UniProt Primary AC:	Q15661 (UniProt , ExPASy)
KEGG:	hsa:7177
String:	9606.ENSP00000343577
Molecular Weight:	Calculated MW: 30.5 kDa
Buffer:	PBS containing 0.09% sodium azide.
Note:	THIS PRODUCT IS FOR RESEARCH USE ONLY. NOT FOR USE IN DIAGNOSTIC, THERAPEUTIC OR COSMETIC PROCEDURES. NOT FOR HUMAN OR ANIMAL CONSUMPTION.

For Reference Only