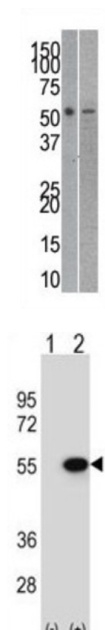


RuvB-Like 2 (RUBV2) Antibody

Catalogue No.: abx025092



This gene encodes the second human homologue of the bacterial RuvB gene. Bacterial RuvB protein is a DNA helicase essential for homologous recombination and DNA double-strand break repair. Functional analysis showed that this gene product has both ATPase and DNA helicase activities. This gene is physically linked to the CGB/LHB gene cluster on chromosome 19q13.3, and is very close (55 nt) to the LHB gene, in the opposite orientation.

Target: RuvB-Like 2 (RUBV2)

Clonality: Polyclonal

Reactivity: Human, Mouse

Tested Applications: ELISA, WB

Host: Rabbit

Recommended dilutions: WB: 1/1000. Optimal dilutions/concentrations should be determined by the end user.

Conjugation: Unconjugated

Immunogen: KLH-conjugated synthetic peptide between 400-430 amino acids from the C-terminal region of human Reptin/TIP49B/RUVB2.

Isotype: IgG

Form: Liquid

Datasheet

Version: 4.0.0
Revision date: 03 Oct 2025



Purification:	Purified through a protein G column, eluted with high and low pH buffers and neutralized immediately, followed by dialysis against PBS.
Storage:	Aliquot and store at -20°C. Avoid repeated freeze/thaw cycles.
UniProt Primary AC:	Q9Y230 (UniProt , ExPASy)
String:	9606.ENSP00000473172
Molecular Weight:	Calculated MW: 51.2 kDa
Buffer:	PBS containing 0.09% sodium azide.
Specificity:	Predicted to react with Cow and Xenopus RUVBL2.
Note:	THIS PRODUCT IS FOR RESEARCH USE ONLY. NOT FOR USE IN DIAGNOSTIC, THERAPEUTIC OR COSMETIC PROCEDURES. NOT FOR HUMAN OR ANIMAL CONSUMPTION.

For Reference Only