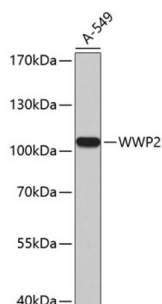


NEDD4-Like E3 Ubiquitin-Protein Ligase WWP2 (WWP2) Antibody

Catalogue No.: abx001912



Western blot analysis of lysates from A-549 cells, using WWP2 Antibody.

WWP2 Antibody is a Rabbit Polyclonal antibody against WWP2. WWP2(WW domain-containing protein 2) is also named as AIP2 and belongs to the NEDD4-like protein family. It functions as an E3 ubiquitin ligase for PTEN that plays a vital role in tumour-cell survival and is also involved in regulating transcription, embryonic stem-cell fate, cellular transport and T-cell activation processes(PMID:21532586).WWP2, which specifically interacted with ES cell-specific transcription factor Oct-4 and promoted its ubiquitination both in vitro and in vivo, is a ubiquitously expressed protein and exists in both cytoplasmic and nuclear compartments in ES cells(PMID:15047715). This antibody is specific to WWP2.

Target:	NEDD4-Like E3 Ubiquitin-Protein Ligase WWP2 (WWP2)
Clonality:	Polyclonal
Reactivity:	Human
Tested Applications:	ELISA, WB
Host:	Rabbit
Recommended dilutions:	ELISA: 1 µg/ml, WB: 1/500 - 1/2000. Optimal dilutions/concentrations should be determined by the end user.
Conjugation:	Unconjugated
Immunogen:	Recombinant fusion protein containing a sequence corresponding to amino acids 151-400 of human WWP2.
Isotype:	IgG
Form:	Liquid
Purification:	Purified by affinity chromatography.
Storage:	Aliquot and store at -20°C. Avoid repeated freeze/thaw cycles.
UniProt Primary AC:	O00308 (UniProt , ExPASy)

Datasheet

Version: 5.0.0
Revision date: 07 Jun 2025



Gene Symbol: WWP2

GeneID: [11060](#)

NCBI Accession: NP_001257383.1

KEGG: hsa:11060

String: [9606.ENSP00000352069](#)

Molecular Weight: Calculated MW: 99 kDa
Observed MW: 105 kDa

Buffer: PBS, pH 7.3, containing 0.01% thimerosal, 50% glycerol.

Concentration: > 0.2 mg/ml

Note: THIS PRODUCT IS FOR RESEARCH USE ONLY. NOT FOR USE IN DIAGNOSTIC, THERAPEUTIC OR COSMETIC PROCEDURES. NOT FOR HUMAN OR ANIMAL CONSUMPTION.

For Reference Only