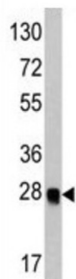
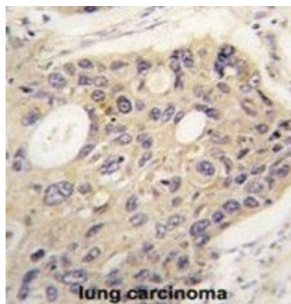
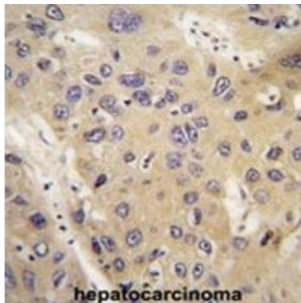


Ubiquitin-Like Protein ATG12 (ATG12) Antibody

Catalogue No.: abx025180



Autophagy is a process of bulk protein degradation in which cytoplasmic components, including organelles, are enclosed in double-membrane structures called autophagosomes and delivered to lysosomes or vacuoles for degradation. ATG12 is the human homolog of a yeast protein involved in autophagy (Mizushima et al., 1998 [PubMed 9852036]).

Target: Ubiquitin-Like Protein ATG12 (ATG12)

Clonality: Monoclonal

Reactivity: Human

Tested Applications: ELISA, WB

Host: Mouse

Recommended dilutions: WB: 1/4000. Optimal dilutions/concentrations should be determined by the end user.

Datasheet

Version: 2.0.0
Revision date: 30 Aug 2025



Conjugation:	Unconjugated
Immunogen:	Human APG12L recombinant protein
Epitope Region:	APG12L recombinant protein
Isotype:	IgG _{2b} Kappa
Form:	Liquid
Purification:	Purified through a protein A column, eluted with high and low pH buffers and neutralized immediately, followed by dialysis against PBS.
Storage:	Aliquot and store at -20°C. Avoid repeated freeze/thaw cycles.
UniProt Primary AC:	O94817 (UniProt , ExPASy)
Gene Symbol:	ATG12
GeneID:	9140
OMIM:	609608
HGNC:	588
KEGG:	hsa:9140
Ensembl:	ENSG00000145782
String:	9606.ENSP00000425107
Molecular Weight:	Calculated MW: 15.1 kDa
Buffer:	PBS containing 0.09% sodium azide.
Note:	THIS PRODUCT IS FOR RESEARCH USE ONLY. NOT FOR USE IN DIAGNOSTIC, THERAPEUTIC OR COSMETIC PROCEDURES. NOT FOR HUMAN OR ANIMAL CONSUMPTION.