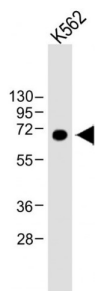
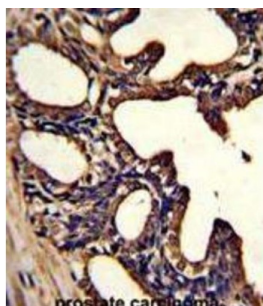


Lactotransferrin (LTF) Antibody

Catalogue No.: abx025182



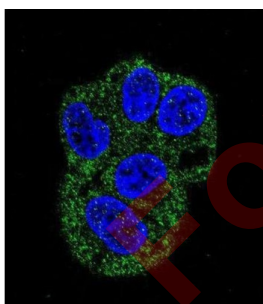
WB analysis of K562 whole cell lysates, using LTF antibody (1/8000 dilution). Predicted band size: 78 kDa. Blocking/dilution buffer: 5% NFDm/TBST.



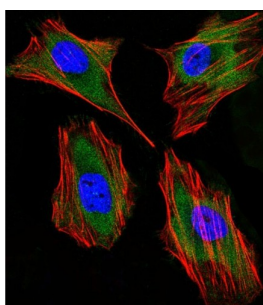
IHC-P analysis of human prostate carcinoma tissue, with DAB staining.



IF analysis of human prostate carcinoma tissue, using LTF antibody (0.05 mg/ml) and PE-conjugated Goat anti-Mouse IgG (orange).



IF analysis of HepG2 cells, using LTF antibody and AF488-conjugated Goat anti-Mouse IgG (green). DAPI was used to stain the cell nucleus (blue).



IF analysis of HeLa cells (4% paraformaldehyde-fixed, 0.1% Triton X-100 permeabilized) using LTF antibody (1/25 dilution) and DL488-conjugated Goat anti-Mouse IgG (1/200 dilution, green), showing cytoplasmic staining. Cytoplasmic actin was detected with DL554-Phalloidin (1/100 dilution, red). DAPI was used to stain the cell nucleus (blue).

Datasheet

Version: 4.0.0
Revision date: 04 Sep 2025



This gene is a member of the transferrin family of genes and its protein product is found in the secondary granules of neutrophils. The protein is a major iron-binding protein in milk and body secretions with an antimicrobial activity, making it an important component of the non-specific immune system. The protein demonstrates a broad spectrum of properties, including regulation of iron homeostasis, host defense against a broad range of microbial infections, anti-inflammatory activity, regulation of cellular growth and differentiation and protection against cancer development and metastasis.

Target:	Lactotransferrin (LTF)
Clonality:	Monoclonal
Reactivity:	Human
Tested Applications:	ELISA, WB, IHC, IF/ICC
Host:	Mouse
Recommended dilutions:	WB: 1/8000, IHC-P: 1/50 - 1/100, IF/ICC: 1/25. Not tested in IHC-F. Optimal dilutions/concentrations should be determined by the end user.
Conjugation:	Unconjugated
Immunogen:	Human LTF recombinant protein.
Isotype:	IgG ₁ Kappa
Form:	Liquid
Purification:	Purified through a protein G column, followed by dialysis against PBS.
Storage:	Aliquot and store at -20°C. Avoid repeated freeze/thaw cycles.
UniProt Primary AC:	P02788 (UniProt , ExPASy)
KEGG:	hsa:4057
String:	9606.ENSP00000231751
Molecular Weight:	Calculated MW: 78.2 kDa
Buffer:	PBS containing 0.09% sodium azide.
Note:	THIS PRODUCT IS FOR RESEARCH USE ONLY. NOT FOR USE IN DIAGNOSTIC, THERAPEUTIC OR COSMETIC PROCEDURES. NOT FOR HUMAN OR ANIMAL CONSUMPTION.