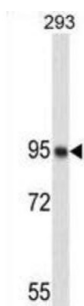
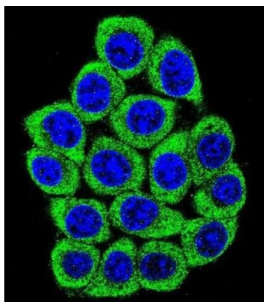


Nucleolin (NCL) Antibody

Catalogue No.: abx025184



Nucleolin (NCL), a eukaryotic nucleolar phosphoprotein, is involved in the synthesis and maturation of ribosomes. It is located mainly in dense fibrillar regions of the nucleolus. Human NCL gene consists of 14 exons with 13 introns and spans approximately 11kb. The intron 11 of the NCL gene encodes a small nucleolar RNA, termed U20.

Target: Nucleolin (NCL)

Clonality: Monoclonal

Reactivity: Human

Tested Applications: ELISA, WB, IHC, IF/ICC

Host: Mouse

Recommended dilutions: WB: 1/500 - 1/1000, IHC-P: 1/50 - 1/100, IF/ICC: 1/10 - 1/50. Not tested in IHC-F. Optimal dilutions/concentrations should be determined by the end user.

Datasheet

Version: 2.0.0
Revision date: 20 Aug 2025



Conjugation:	Unconjugated
Immunogen:	Human NUCL protein.
Isotype:	IgG ₁
Form:	Liquid
Purification:	Purified through a protein G column, eluted with high and low pH buffers and neutralized immediately, followed by dialysis against PBS.
Storage:	Aliquot and store at -20°C. Avoid repeated freeze/thaw cycles.
UniProt Primary AC:	P19338 (UniProt , ExPASy)
KEGG:	hsa:4691
String:	9606.ENSP00000318195
Molecular Weight:	Calculated MW: 76.6 kDa
Buffer:	PBS containing 0.09% sodium azide.
Note:	THIS PRODUCT IS FOR RESEARCH USE ONLY. NOT FOR USE IN DIAGNOSTIC, THERAPEUTIC OR COSMETIC PROCEDURES. NOT FOR HUMAN OR ANIMAL CONSUMPTION.