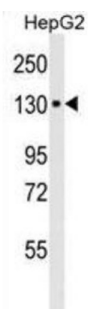
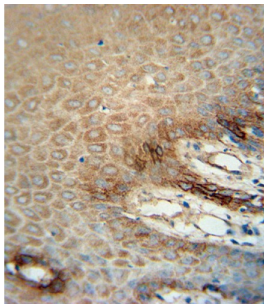
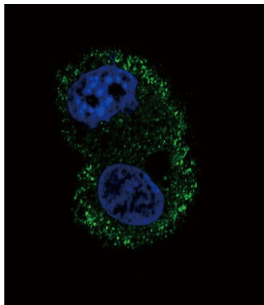


Integrin Alpha-6 (ITA6) Antibody

Catalogue No.: abx025188



The ITGA6 protein product is the integrin alpha chain alpha 6. Integrins are integral cell-surface proteins composed of an alpha chain and a beta chain. A given chain may combine with multiple partners resulting in different integrins. For example, alpha 6 may combine with beta 4 in the integrin referred to as TSP180, or with beta 1 in the integrin VLA-6. Integrins are known to participate in cell adhesion as well as cell-surface mediated signalling. Two transcript variants encoding different isoforms have been found for this gene.

Target:	Integrin Alpha-6 (ITA6)
Clonality:	Monoclonal
Reactivity:	Human
Tested Applications:	ELISA, IHC, IF/ICC, FCM
Host:	Mouse

Datasheet

Version: 2.0.0
Revision date: 27 Jul 2025



Recommended dilutions: IHC-P: 1/10 - 1/50, IF/ICC: 1/10 - 1/50, FCM: 1/10 - 1/50. Not tested in IHC-F. Optimal dilutions/concentrations should be determined by the end user.

Conjugation: Unconjugated

Immunogen: Human ITA6 recombinant protein

Epitope Region: ITA6 recombinant protein

Isotype: IgG, Kappa

Form: Liquid

Purification: Purified through a protein G column, eluted with high and low pH buffers and neutralized immediately, followed by dialysis against PBS.

Storage: Aliquot and store at -20°C. Avoid repeated freeze/thaw cycles.

UniProt Primary AC: P23229 ([UniProt](#), [ExPASy](#))

Molecular Weight: Calculated MW: 127 kDa

Buffer: PBS containing 0.09% sodium azide.

Note: THIS PRODUCT IS FOR RESEARCH USE ONLY. NOT FOR USE IN DIAGNOSTIC, THERAPEUTIC OR COSMETIC PROCEDURES. NOT FOR HUMAN OR ANIMAL CONSUMPTION.

For Reference Only