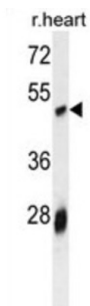
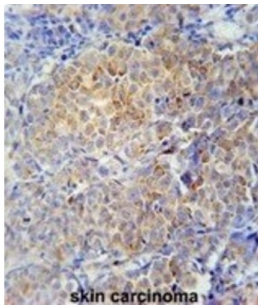


Rat Serpinh1 Antibody

Catalogue No.: abx025194



This product is currently in development. The lead time for this product may be several months. Please contact us at info@abbexa.com for an updated lead time before purchasing this product.

Rat Serpinh1 Antibody is a Mouse Monoclonal antibody against Rat Serpinh1. This antibody is supplied as crude ascites.

Target: Serpinh1

Clonality: Monoclonal

Reactivity: Human, Mouse

Tested Applications: ELISA, WB, IHC

Host: Mouse

Recommended dilutions: WB: 1/4000, IHC-P: 1/100 - 1/500. Not tested in IHC-F. Optimal dilutions/concentrations should be determined by the end user.

Conjugation: Unconjugated

Immunogen: KLH-conjugated synthetic peptide between 222-251 amino acids from the Central region of rat Serpinh1.

Isotype: IgG₁

Datasheet

Version: 3.0.0
Revision date: 18 Mar 2025



Form:	Liquid
Purification:	Unpurified crude ascites.
Storage:	Aliquot and store at -20°C. Avoid repeated freeze/thaw cycles.
UniProt Primary AC:	P29457 (UniProt , ExPASy)
KEGG:	rno:29345
String:	10116.ENSRNOP00000022983
Molecular Weight:	Calculated MW: 46.5 kDa
Buffer:	Ascites containing 0.09% sodium azide.
Specificity:	Predicted to react with Cow Serpinh1.
Note:	THIS PRODUCT IS FOR RESEARCH USE ONLY. NOT FOR USE IN DIAGNOSTIC, THERAPEUTIC OR COSMETIC PROCEDURES. NOT FOR HUMAN OR ANIMAL CONSUMPTION.

For Reference Only