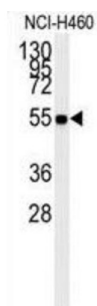
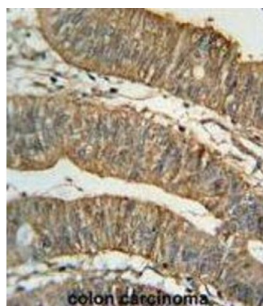
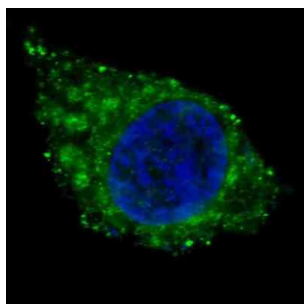


## Retinal Dehydrogenase 1 (ALDH1A1) Antibody

Catalogue No.: abx025203



ALDH1A1 encodes a transcriptional regulator belonging to the SCY1-like family of kinase-like proteins. The protein has a divergent N-terminal kinase domain that is thought to be catalytically inactive, and can bind specific DNA sequences through its C-terminal domain. It activates transcription of the telomerase reverse transcriptase and DNA polymerase beta genes. The protein has been localized to the nucleus, and also to the cytoplasm and centrosomes during mitosis.

**Target:** Retinal Dehydrogenase 1 (ALDH1A1)

**Clonality:** Monoclonal

**Reactivity:** Human

**Tested Applications:** ELISA, WB, IHC

**Host:** Mouse

**Recommended dilutions:** WB: 1/500 - 1/1000, IHC-P: 1/50 - 1/100. Not tested in IHC-F. Optimal dilutions/concentrations should be determined by the end user.

# Datasheet

Version: 3.0.0  
Revision date: 19 Aug 2025



<b>Conjugation:</b>	Unconjugated
<b>Immunogen:</b>	Human ALDH1A1 recombinant protein.
<b>Isotype:</b>	IgG <sub>1</sub>
<b>Form:</b>	Liquid
<b>Purification:</b>	Purified through a protein G column, eluted with high and low pH buffers and neutralized immediately, followed by dialysis against PBS.
<b>Storage:</b>	Aliquot and store at -20°C. Avoid repeated freeze/thaw cycles.
<b>UniProt Primary AC:</b>	P00352 ( <a href="#">UniProt</a> , <a href="#">ExPASy</a> )
<b>KEGG:</b>	hsa:216
<b>String:</b>	<a href="#">9606.ENSP00000297785</a>
<b>Molecular Weight:</b>	Calculated MW: 54.9 kDa
<b>Buffer:</b>	PBS containing 0.09% sodium azide.
<b>Note:</b>	THIS PRODUCT IS FOR RESEARCH USE ONLY. NOT FOR USE IN DIAGNOSTIC, THERAPEUTIC OR COSMETIC PROCEDURES. NOT FOR HUMAN OR ANIMAL CONSUMPTION.