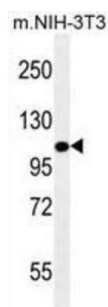
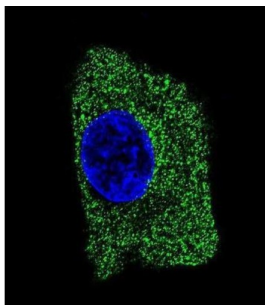


## Lysosomal Associated Membrane Protein 2 (LAMP2) Antibody

Catalogue No.: abx025208



Implicated in tumor cell metastasis. May function in protection of the lysosomal membrane from autodigestion, maintenance of the acidic environment of the lysosome, adhesion when expressed on the cell surface (plasma membrane), and inter-and intracellular signal transduction. Protects cells from the toxic effects of methylating mutagens.

**Target:** Lysosomal Associated Membrane Protein 2 (LAMP2)

**Clonality:** Monoclonal

**Reactivity:** Human

**Tested Applications:** ELISA, WB, IHC, IF/ICC

**Host:** Mouse

**Recommended dilutions:** WB: 1/2000-8000, IHC: 1/500, IF/ICC: 1/10 - 1/50. Not tested in IHC-F. Optimal dilutions/concentrations should be determined by the end user.

**Conjugation:** Unconjugated

**Immunogen:** Human LAMP2 recombinant protein.

**Isotype:** IgG<sub>1</sub> Kappa

**Form:** Liquid

# Datasheet

Version: 1.0.0  
Revision date: 04 May 2025



<b>Purification:</b>	Purified through a protein G column, eluted with high and low pH buffers and neutralized immediately, followed by dialysis against PBS.
<b>Storage:</b>	Aliquot and store at -20°C. Avoid repeated freeze/thaw cycles.
<b>UniProt Primary AC:</b>	P13473 ( <a href="#">UniProt</a> , <a href="#">ExPASy</a> )
<b>KEGG:</b>	hsa:3920
<b>String:</b>	<a href="#">9606.ENSP00000408411</a>
<b>Molecular Weight:</b>	Calculated MW: 45 kDa
<b>Buffer:</b>	PBS containing 0.09% sodium azide.
<b>Note:</b>	THIS PRODUCT IS FOR RESEARCH USE ONLY. NOT FOR USE IN DIAGNOSTIC, THERAPEUTIC OR COSMETIC PROCEDURES. NOT FOR HUMAN OR ANIMAL CONSUMPTION.

For Reference Only