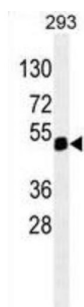
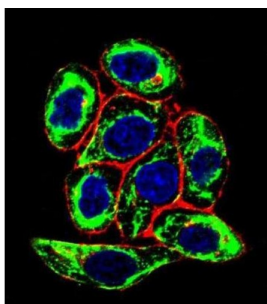


Paired Box Protein Pax-6 (PAX6) Antibody

Catalogue No.: abx025233



This gene encodes paired box gene 6, one of many human homologs of the *Drosophila melanogaster* gene *prd*. In addition to the hallmark feature of this gene family, a conserved paired box domain, the encoded protein also contains a homeo box domain. Both domains are known to bind DNA, and function as regulators of gene transcription. This gene is expressed in the developing nervous system, and in developing eyes. Mutations in this gene are known to cause ocular disorders such as aniridia and Peter's anomaly. Alternatively spliced transcript variants encoding either the same or different isoform have been found for this gene. [provided by RefSeq]. This antibody is supplied as crude ascites.

Target: Paired Box Protein Pax-6 (PAX6)

Clonality: Monoclonal

Reactivity: Human

Tested Applications: ELISA, WB, IF/ICC

Host: Mouse

Recommended dilutions: WB: 1/500 - 1/16000, IF/ICC: 1/10 - 1/50. Optimal dilutions/concentrations should be determined by the end user.

Conjugation: Unconjugated

Immunogen: Purified His-tagged recombinant human PAX6.

Isotype: IgM Kappa

Datasheet

Version: 2.0.0

Revision date: 06 Sep 2025



Form:	Liquid
Purification:	Unpurified crude ascites.
Storage:	Aliquot and store at -20°C. Avoid repeated freeze/thaw cycles.
UniProt Primary AC:	P26367 (UniProt , ExPASy)
KEGG:	hsa:5080
String:	9606.ENSP00000404100
Molecular Weight:	Calculated MW: 46.7 kDa
Buffer:	Ascites containing 0.09% sodium azide.
Specificity:	Predicted to react with Mouse and Cow PAX6.
Note:	THIS PRODUCT IS FOR RESEARCH USE ONLY. NOT FOR USE IN DIAGNOSTIC, THERAPEUTIC OR COSMETIC PROCEDURES. NOT FOR HUMAN OR ANIMAL CONSUMPTION.

For Reference Only