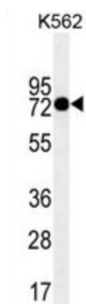


## Protein-Glutamine Gamma-Glutamyltransferase 2 (TGM2) Antibody

Catalogue No.: abx025254



Transglutaminases are enzymes that catalyze the crosslinking of proteins by epsilon-gamma glutamyl lysine isopeptide bonds. While the primary structure of transglutaminases is not conserved, they all have the same amino acid sequence at their active sites and their activity is calcium-dependent. The protein encoded by this gene acts as a monomer, is induced by retinoic acid, and appears to be involved in apoptosis. Finally, the encoded protein is the autoantigen implicated in celiac disease. Two transcript variants encoding different isoforms have been found for this gene. This antibody is supplied as crude ascites.

**Target:** Protein-Glutamine Gamma-Glutamyltransferase 2 (TGM2)

**Clonality:** Monoclonal

**Reactivity:** Human

**Tested Applications:** ELISA, WB

**Host:** Mouse

**Recommended dilutions:** WB: 1/1000. Optimal dilutions/concentrations should be determined by the end user.

**Conjugation:** Unconjugated

**Immunogen:** Human TGM2 recombinant protein.

**Isotype:** IgG<sub>1</sub>

**Form:** Liquid

**Purification:** Unpurified crude ascites.

**Storage:** Aliquot and store at -20°C. Avoid repeated freeze/thaw cycles.

**UniProt Primary AC:** P21980 ([UniProt](#), [ExPASy](#))

# Datasheet

Version: 2.0.0

Revision date: 22 Sep 2025



**KEGG:** hsa:7052

**String:** [9606.ENSP00000355330](#)

**Molecular Weight:** Calculated MW: 77.3 kDa

**Buffer:** Ascites containing 0.09% sodium azide.

**Note:** THIS PRODUCT IS FOR RESEARCH USE ONLY. NOT FOR USE IN DIAGNOSTIC, THERAPEUTIC OR COSMETIC PROCEDURES. NOT FOR HUMAN OR ANIMAL CONSUMPTION.

For Reference Only