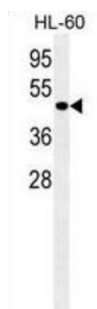
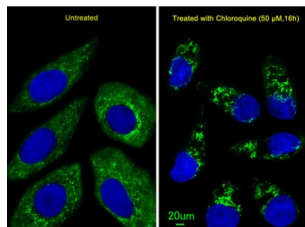


Autophagy Related 4D Cysteine Peptidase (ATG4D) Antibody

Catalogue No.: abx025263



Autophagy is the process by which endogenous proteins and damaged organelles are destroyed intracellularly. Autophagy is postulated to be essential for cell homeostasis and cell remodeling during differentiation, metamorphosis, non-apoptotic cell death, and aging. Reduced levels of autophagy have been described in some malignant tumors, and a role for autophagy in controlling the unregulated cell growth linked to cancer has been proposed. This gene encodes a member of the autophagin protein family. The encoded protein is also designated as a member of the C-54 family of cysteine proteases.

Target: Autophagy Related 4D Cysteine Peptidase (ATG4D)

Clonality: Monoclonal

Reactivity: Human

Tested Applications: ELISA, WB, IF/ICC

Host: Mouse

Recommended dilutions: WB: 1/4000, IF/ICC: 1/25. Optimal dilutions/concentrations should be determined by the end user.

Conjugation: Unconjugated

Immunogen: Human ATG4D recombinant protein.

Isotype: IgG₁ Kappa

Datasheet

Version: 6.0.0

Revision date: 07 Aug 2025



Form:	Liquid
Purification:	Purified through a protein G column, eluted with high and low pH buffers and neutralized immediately, followed by dialysis against PBS.
Storage:	Aliquot and store at -20°C. Avoid repeated freeze/thaw cycles.
UniProt Primary AC:	Q86TL0 (UniProt , ExPASy)
KEGG:	hsa:84971
String:	9606.ENSP00000311318
Molecular Weight:	Calculated MW: 52.9 kDa
Buffer:	PBS containing 0.09% sodium azide.
Note:	THIS PRODUCT IS FOR RESEARCH USE ONLY. NOT FOR USE IN DIAGNOSTIC, THERAPEUTIC OR COSMETIC PROCEDURES. NOT FOR HUMAN OR ANIMAL CONSUMPTION.

For Reference Only