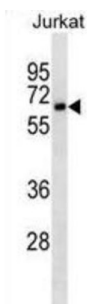


## Interleukin 2 Receptor Alpha (IL2RA) Antibody

Catalogue No.: abx025269



The interleukin 2 (IL2) receptor alpha (IL2RA) and beta (IL2RB) chains, together with the common gamma chain (IL2RG), constitute the high-affinity IL2 receptor. Homodimeric alpha chains (IL2RA) result in low-affinity receptor, while homodimeric beta (IL2RB) chains produce a medium-affinity receptor. Normally an integral-membrane protein, soluble IL2RA has been isolated and determined to result from extracellular proteolysis. Alternately-spliced IL2RA mRNAs have been isolated, but the significance of each is presently unknown. Mutations in this gene are associated with interleukin 2 receptor alpha deficiency.

**Target:** Interleukin 2 Receptor Alpha (IL2RA)**Clonality:** Monoclonal**Reactivity:** Human**Tested Applications:** ELISA, WB**Host:** Mouse**Recommended dilutions:** WB: 1/500 - 1/1000. Optimal dilutions/concentrations should be determined by the end user.**Conjugation:** Unconjugated**Immunogen:** Purified His-tagged Human CD25 protein (Fragment)**Isotype:** IgG<sub>2a</sub>**Form:** Liquid**Purification:** Unpurified crude ascites.**Storage:** Aliquot and store at -20°C. Avoid repeated freeze/thaw cycles.**UniProt Primary AC:** P01589 ([UniProt](#), [ExPASy](#))

# Datasheet

Version: 2.0.0

Revision date: 05 Sep 2025



**KEGG:** hsa:3559

**String:** [9606.ENSP00000369293](#)

**Molecular Weight:** Calculated MW: 30.8 kDa

**Buffer:** Ascites containing 0.09% sodium azide.

**Note:** THIS PRODUCT IS FOR RESEARCH USE ONLY. NOT FOR USE IN DIAGNOSTIC, THERAPEUTIC OR COSMETIC PROCEDURES. NOT FOR HUMAN OR ANIMAL CONSUMPTION.

For Reference Only