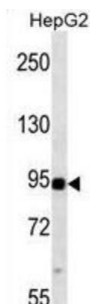


# Mitogen-Activated Protein Kinase Kinase Kinase 11 (MAP3K11) Antibody

Catalogue No.: abx025275



The protein encoded by this gene is a member of the serine/threonine kinase family. This kinase contains a SH3 domain and a leucine zipper-basic motif. This kinase preferentially activates MAPK8/JNK kinase, and functions as a positive regulator of JNK signaling pathway. This kinase can directly phosphorylate, and activates I $\kappa$ B kinase alpha and beta, and is found to be involved in the transcription activity of NF- $\kappa$ B mediated by Rho family GTPases and CDC42. This antibody is supplied as crude ascites.

**Target:** Mitogen-Activated Protein Kinase Kinase Kinase 11 (MAP3K11)

**Clonality:** Monoclonal

**Reactivity:** Human

**Tested Applications:** ELISA, WB

**Host:** Mouse

**Recommended dilutions:** WB: 1/500 - 1/1000. Optimal dilutions/concentrations should be determined by the end user.

**Conjugation:** Unconjugated

**Immunogen:** Human MAP3K11 recombinant protein.

**Isotype:** IgM Kappa

**Form:** Liquid

**Purification:** Unpurified crude ascites.

**Storage:** Aliquot and store at -20°C. Avoid repeated freeze/thaw cycles.

**UniProt Primary AC:** Q16584 ([UniProt](#), [ExPASy](#))

# Datasheet

Version: 1.0.0

Revision date: 07 Jun 2025



**KEGG:** hsa:4296

**String:** [9606.ENSP00000309597](#)

**Molecular Weight:** Calculated MW: 92.7 kDa

**Buffer:** Ascites containing 0.09% sodium azide.

**Note:** THIS PRODUCT IS FOR RESEARCH USE ONLY. NOT FOR USE IN DIAGNOSTIC, THERAPEUTIC OR COSMETIC PROCEDURES. NOT FOR HUMAN OR ANIMAL CONSUMPTION.

For Reference Only